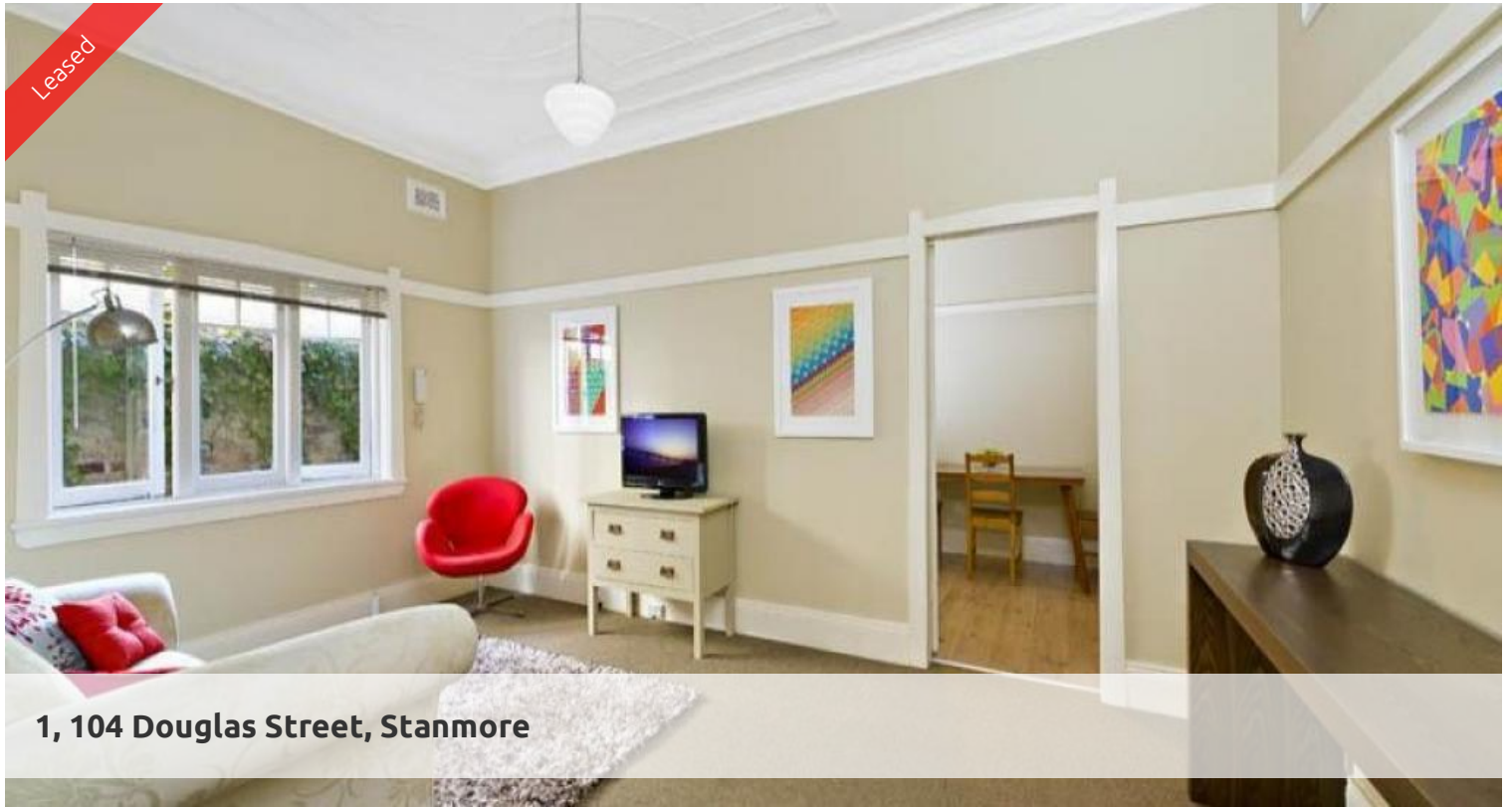
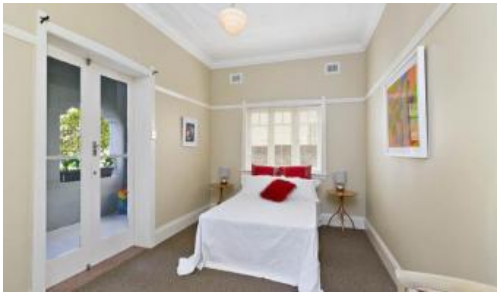


Leased



1, 104 Douglas Street, Stanmore



TWO BEDROOM APARTMENT AVAILABLE NOW

Available Now

Hidden away in a small classic Art Deco block of 8 apartments this two bedroom apartment will not last long.

With fresh interiors this apartment is of generous size and offers original features such as high ornate ceilings and picture railings throughout.

Consisting of two large bedrooms, main with private balcony, separate living area as well as a dining room/eat in kitchen with gas cooking and shared laundry facilities.

Situated on a leafy street, with ample street parking you will be within easy walking distance to Stanmore and Petersham train station and buses, along with Norton Street plaza for all your shopping and entertainment needs.

For any further information please email daniel@greenciff.com.au or contact our office.

The above information provided has been furnished to us by the vendor/s. We have not verified whether or not that information is accurate and do not have any belief in one way or the other in its accuracy. We do not accept any responsibility to any person for its accuracy and do no more than pass it on. All interested parties should make and rely upon their own inquiries in order to determine whether or not this information is in fact accurate.

 2  1

Price	\$525 per Week
Property Type	Rental
Property ID	614
Land Area	0 m2

Agent Details

William Chen - 0430 026 436
william@greenciff.com.au

Office Details

Greenciff Sydney Kent St
Level 10/488 Kent Street Sydney NSW
2000 Australia
02 8823 8818

greenciff
Inner city specialists