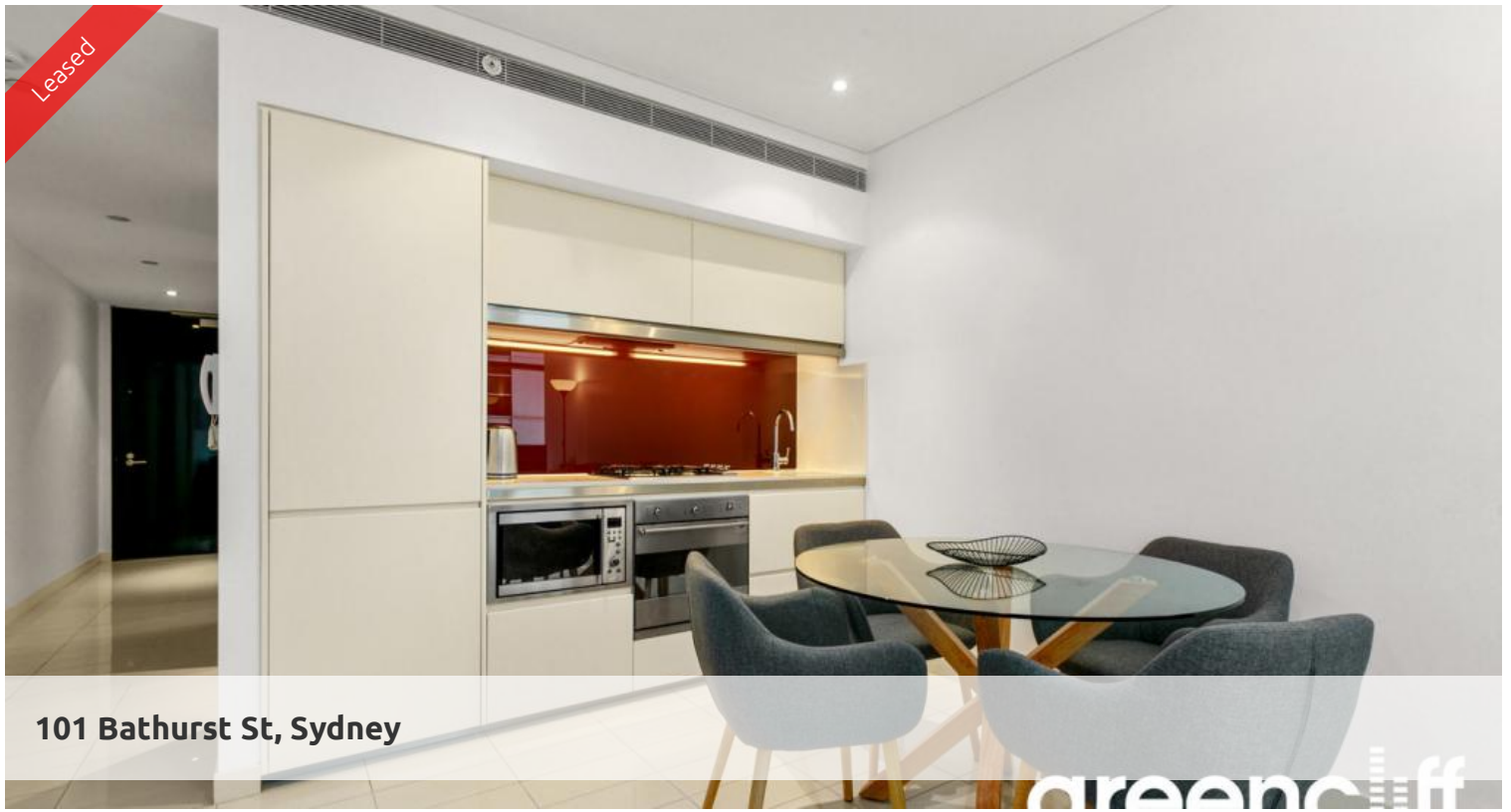


Leased



101 Bathurst St, Sydney

greenciff



Furnished 1 Large Bed Apartment

Extraordinary Lumiere Residences, Sydney's mid-town becomes a vibrant living quarter through creation of Regent Place, Australia's first vertical village. The 56 - level residential tower with 456 light-filled homes is an extraordinary re-invention of high-rise living.

This one bedroom furnished apartment features:

- Combined lounge and dining area
- Open plan kitchen with European gas cooking, Stone benchtop and drawer dishwasher
- Double sized bedroom with built-in wardrobes
- Floor to ceiling windows
- Internal laundry with dryer

*** Parking available on a separate lease

The Lumiere Residences features 2 levels of private residential facilities including a 50 metre swimming pool spanning indoor to outdoor, a comprehensive first class gym, yoga/games room, 2 cinemas, meeting area and 24 hour concierge/security. During Covid, availabilities of these facilities are managed by building management and as such please adhere to their instructions.

Living in Lumiere is all about giving residents the distinct advantage of convenience, such as finding something to do as close as "downstairs" in Regent's Place own restaurants, or the city's cinema precinct.

The above information provided has been furnished to us by the vendor/s. We have not verified whether or not that information is accurate and do not have any belief in one way or the other in its accuracy. We do not accept any responsibility to any person for its accuracy and do no more than pass it on. All interested parties should make and rely upon their own inquiries in order to determine whether or not this information is in fact accurate.

🛏 1 🚿 1

Price Level 18 | \$800 PW -
DEPOSIT TAKEN

Property Type Rental

Property ID 6101

Agent Details

Lieu Mai - 0415 797 525
lieu@greenciff.com.au

Office Details

Greenciff Sydney Kent St
Level 10/488 Kent Street Sydney NSW
2000 Australia
02 8823 8818

greenciff
Inner city specialists