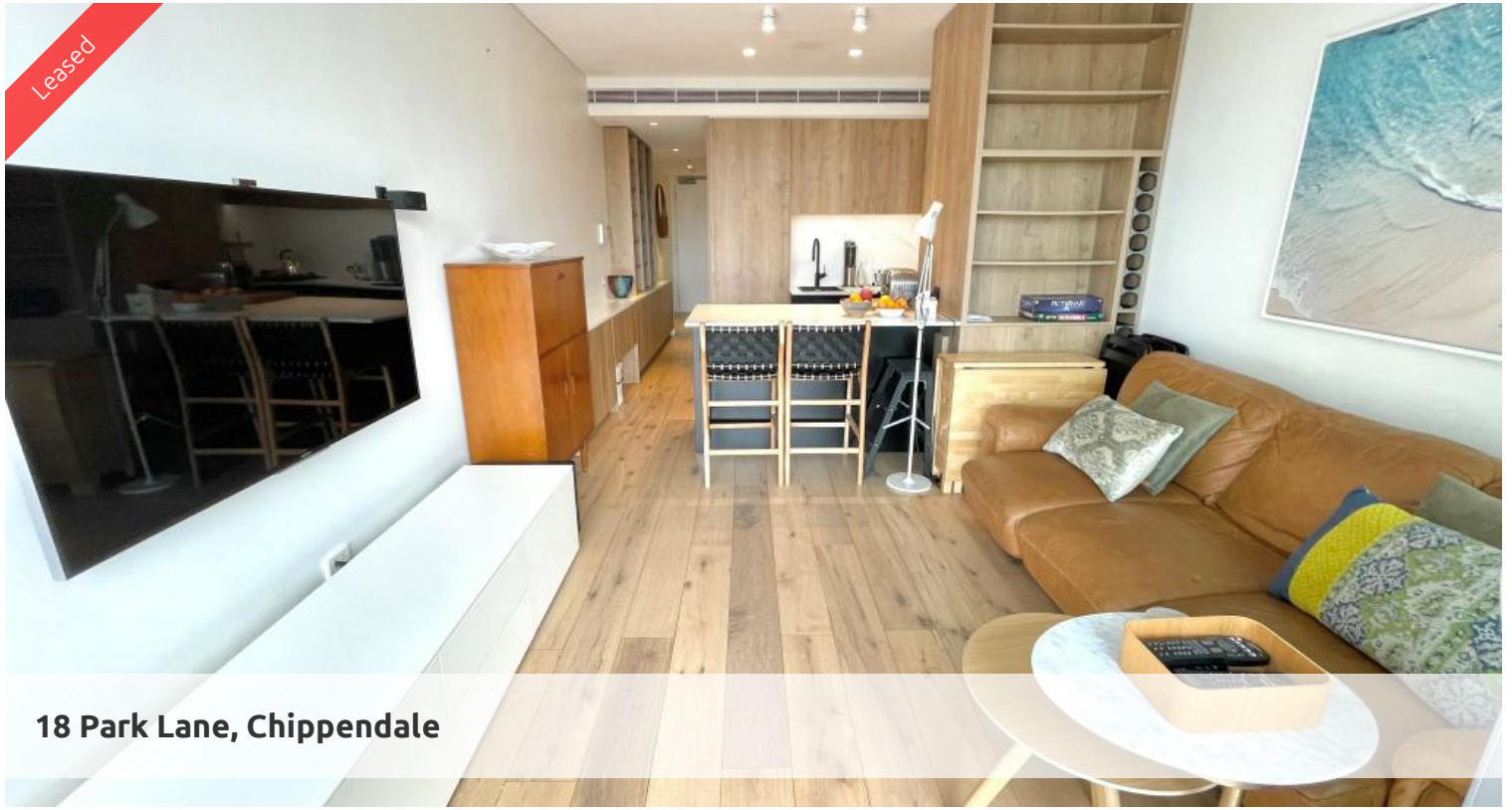


Leased



18 Park Lane, Chippendale



FURNISHED ONE BEDROOM WITH PLENTY OF NATURAL LIGHT

Please meet at our office at 5 Carlton St, Chippendale a few minutes before to register and inspect.

“The Mark is the future of vibrant inner city living and a shining example of all that advanced technologies and bold imaginations can contribute to modern and sustainable living”

This fully furnished apartment boast intelligent and lifestyle-savvy interiors, features:

- Ducted air conditioning
- Loggia for indoor/outdoor living
- Fridge and washer/dryer included
- Updated Kitchen/stone bench tops with island benchtop
- The latest bathroom fittings and design
- Timber flooring throughout (carpeted bedroom)
- Self contained laundry (not shared)

The Mark offers

The Deck - Situated on the rooftop with a spa, terrace spaces to relax

The Lounge Room – Situated on the ground floor with wireless reading room

The Lobby - A 24/7 concierge and security services

 1  1

Price

Level 10 | DEPOSIT
TAKEN

**Property
Type**

Rental

Property ID

6066

Agent Details

William Chen - 0430 026 436

william@greenciff.com.au

Daniel Ho - 0424 089 868

daniel@greenciff.com.au

Office Details

Greenciff Central Park Office

101/5 Carlton Street Chippendale NSW

2008 Australia

02 9199 6555

greenciff
Inner city specialists