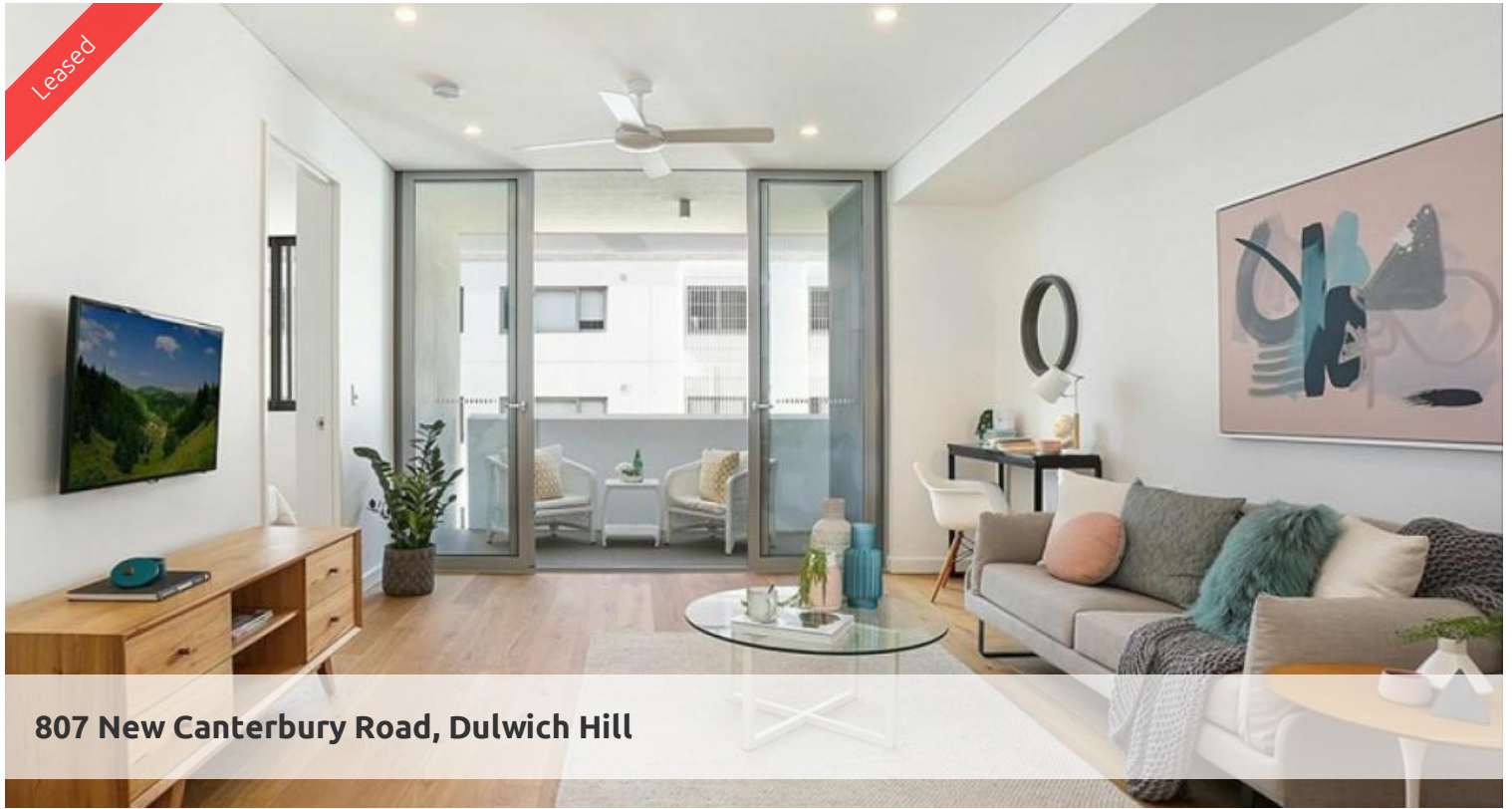


Leased



807 New Canterbury Road, Dulwich Hill



One Bedroom Apartment with parking

Live the life you deserve with the one of the best developments in the Inner West. With an elevated position in the architect-designed 'Dulwich Green' complex, this luxe apartment is light-filled and complete with high quality finishes.

Features of this apartment include:

- Spacious combined lounge and dining area with timber flooring
- Designer kitchen with stainless steel appliances, dishwasher and gas cooking
- Double sized bedroom with floor to ceiling built in robes
- Ducted air conditioning and ceiling fans
- Brand new timber floors throughout
- Freshly painted apartment
- Brand new roller blinds
- Highest quality finishes
- Basement storage and parking, lift access
- Pets Considered on application

The development includes a communal garden area.

All within short walking distance to Hurlstone Park Rail (8 minutes), Dulwich Grove light rail, local cafes and schools makes this the perfect address to call home.

For further information or to inspect, please contact Tammy on 0431 511 907 or email: tammy@greenciff.com.au

** Please note, images used may be indicatives only.

The above information provided has been furnished to us by the vendor/s. We have not verified whether or not that information is accurate and do not have any belief in one way or the other in its accuracy. We do not accept any responsibility to any person for its accuracy and do no more than pass it on. All interested parties should make and rely upon their own inquiries in order to determine whether or not this information is in fact accurate.

🛏 1 📶 1 🚗 1

Price LEVEL 3/ DEPOSIT TAKEN
Property Type Rental
Property ID 6054

Agent Details

Tammy (Rungnapa) Kanittanon - 0431 511 907
tammy@greenciff.com.au

Office Details

Greenciff Camperdown Office
Shop 1 1 Sterling Cct Camperdown NSW
2050 Australia
02 8262 8262

greenciff
Inner city specialists