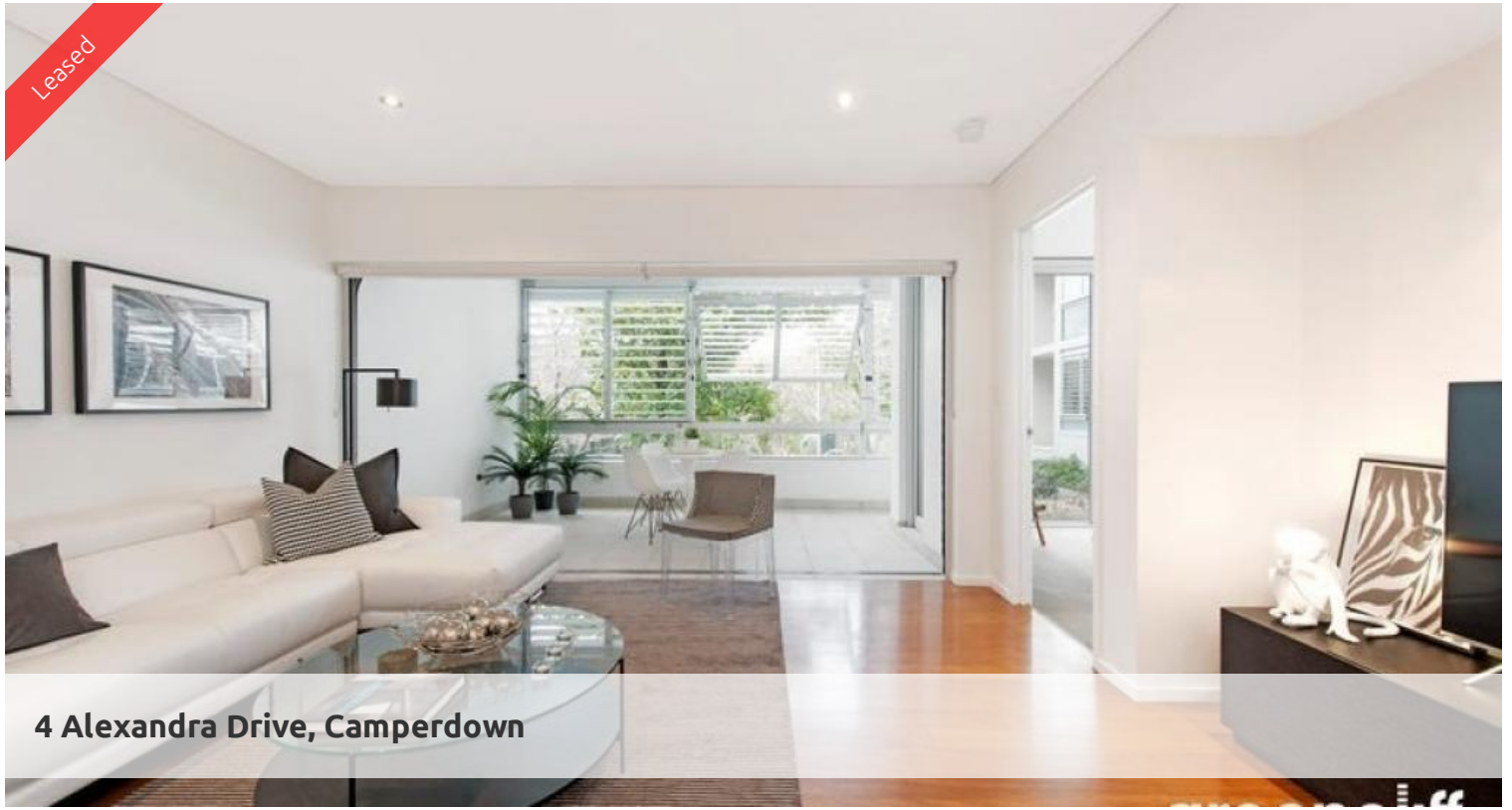


Leased



4 Alexandra Drive, Camperdown



ONE BEDROOM APARTMENT WITH GARDEN AND CITY GLIMPSE VIEWS

Located in the much sort after City Quarter Complex and within a short walk to city transport, cafes, restaurants and shopping centres this immaculate north facing apartment is a must see.

Stylish layout , spacious interiors and a superb view what more can you ask for.

The apartment features;

- Large open plan living/dining area with polished timber floors
- Fantastic natural light, enclosed loggia with tranquil aspect
- Spacious kitchen with stainless appliances and dishwasher
- Spacious bedroom with built-ins and timber floors, walk through bathroom
- Internal laundry with Dryer, downlights
- 24 hour security with lift access
- Parking space included

Aquilon building is beautifully position opposite the City Quarter gardens with access to an Indoor 25 metre pool and 50 metre outdoor pool as well as two well equipped gyms.

Ideally located close to Sydney University, Broadway shopping centre and RPA this apartment is all you need.

For further information or to inspect, please contact Tammy on 0431 511 907 or email: tammy@greenciff.com.au

** images used maybe indicatives only**

The above information provided has been furnished to us by the vendor/s. We have not verified whether or not that information is accurate and do not have any belief in one way or the other in its accuracy. We do not accept any responsibility to any person for its accuracy and do no more than pass it on. All interested parties should make and rely upon their own inquiries in order to determine

🛏 1 📶 1 🚗 1

Price

LEVEL 3 | DEPOSIT
TAKEN

**Property
Type**

Rental

Property ID

5958

Agent Details

Tammy (Rungnapa) Kanittanon - 0431
511 907 tammy@greenciff.com.au

Office Details

Greenciff Camperdown Office
Shop 1 1 Sterling Cct Camperdown NSW
2050 Australia
02 8262 8262

greenciff
Inner city specialists