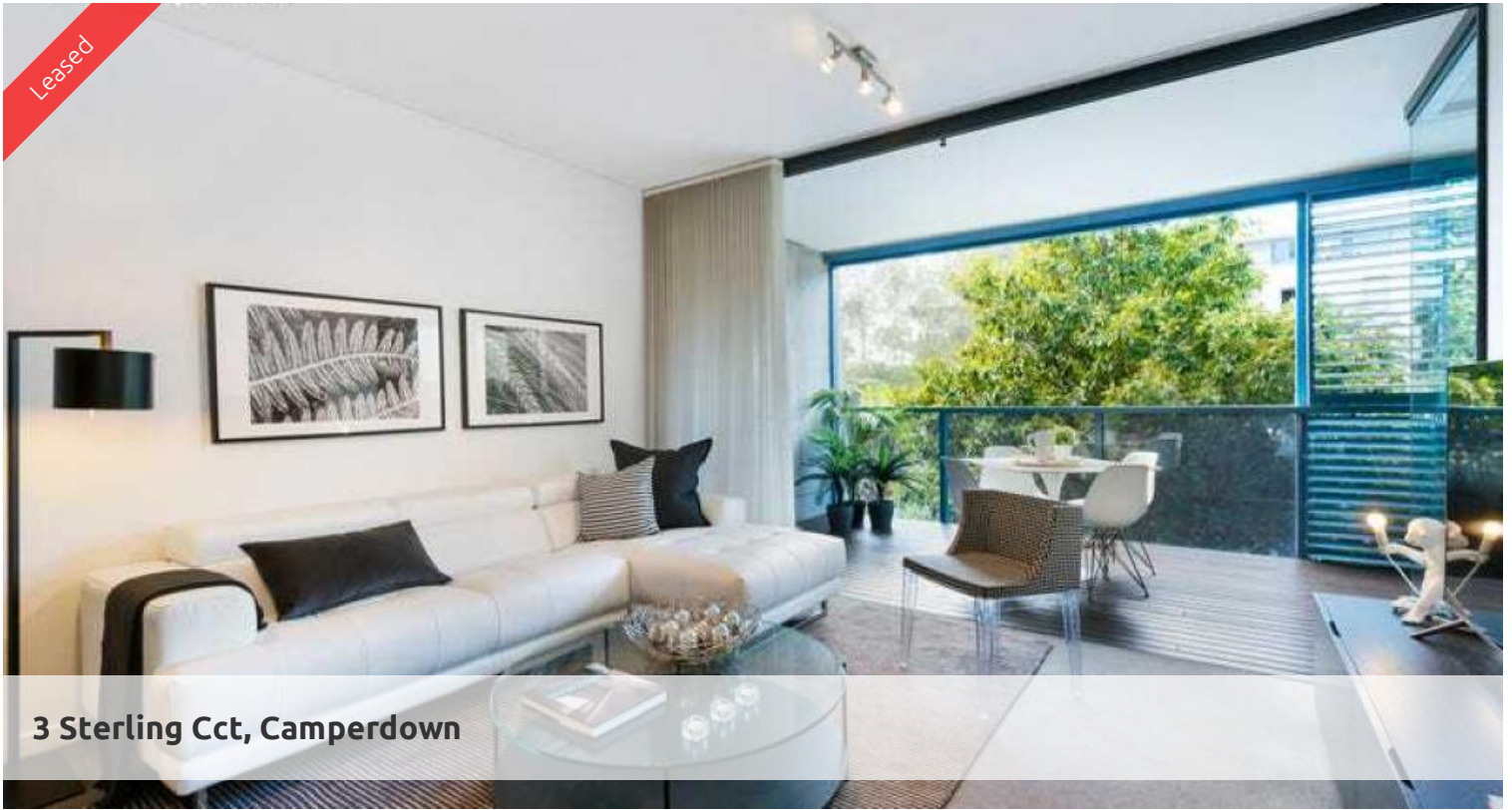
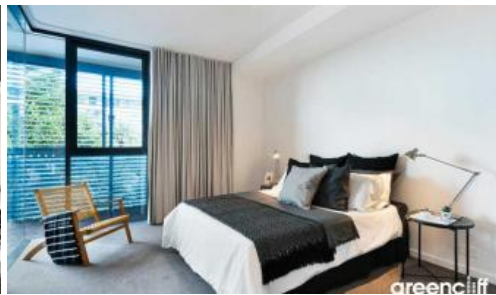


Leased



3 Sterling Cct, Camperdown



Spacious One Bedroom apartment with tranquil district views

Occupying an elevated site on the corner of Booth Street and Pyrmont Bridge Road, Camperdown, Trio is a bold and brilliant addition to the landscape. Trio combines the cosmopolitan culture and accessibility of the Inner West with all the benefits of living spaces designed for the most modern of lifestyles.

Sculptural gardens infiltrate the foyer, meshing the building with its environment. Inside the story is equally modern, loggias which enhance and add flexibility to the open plan.

Apartment features:

- Spacious living area boasting tranquil leafy outlook, air conditioning
- Uninterrupted district views with no other apartments looking in on level 8
- Ultra modern open plan kitchen with gas cook top and dishwasher
- Private loggia with timber decking, ideal for alfresco entertaining
- Large bedroom with built-in wardrobe, light and airy throughout
- Modern bathroom with separate bath and shower
- Undercover security car space plus storage cage
- Fridge, washer machine and dryer inclusive

Being in The City Quarter Complex you will be able to enjoy the free, unlimited access to your choice of a 50 metre outdoor or 25m indoor pool and two gymnasiums. The complex also has 24 hour security, a Japanese restaurant & cafes. Only a 10 minute bus ride to the city or an easy stroll to Tramsheds, Jubilee park, Glebe, RPA hospital, Sydney University, Broadway, Leichhardt and Newtown which are just around the corner.

For further information or to inspect, please contact Tammy on 0431 511 907 or email: tammy@greenciff.com.au

🛏 1 🚿 1 🚗 1

Price LEVEL 8 | LEASED AT FIRST INSPECTION

Property Type Rental

Property ID 5938

Agent Details

Tammy (Rungnapa) Kanittanon - 0431 511 907 tammy@greenciff.com.au

Office Details

Greenciff Camperdown Office
Shop 1 1 Sterling Cct Camperdown NSW
2050 Australia
02 8262 8262

greenciff
Inner city specialists