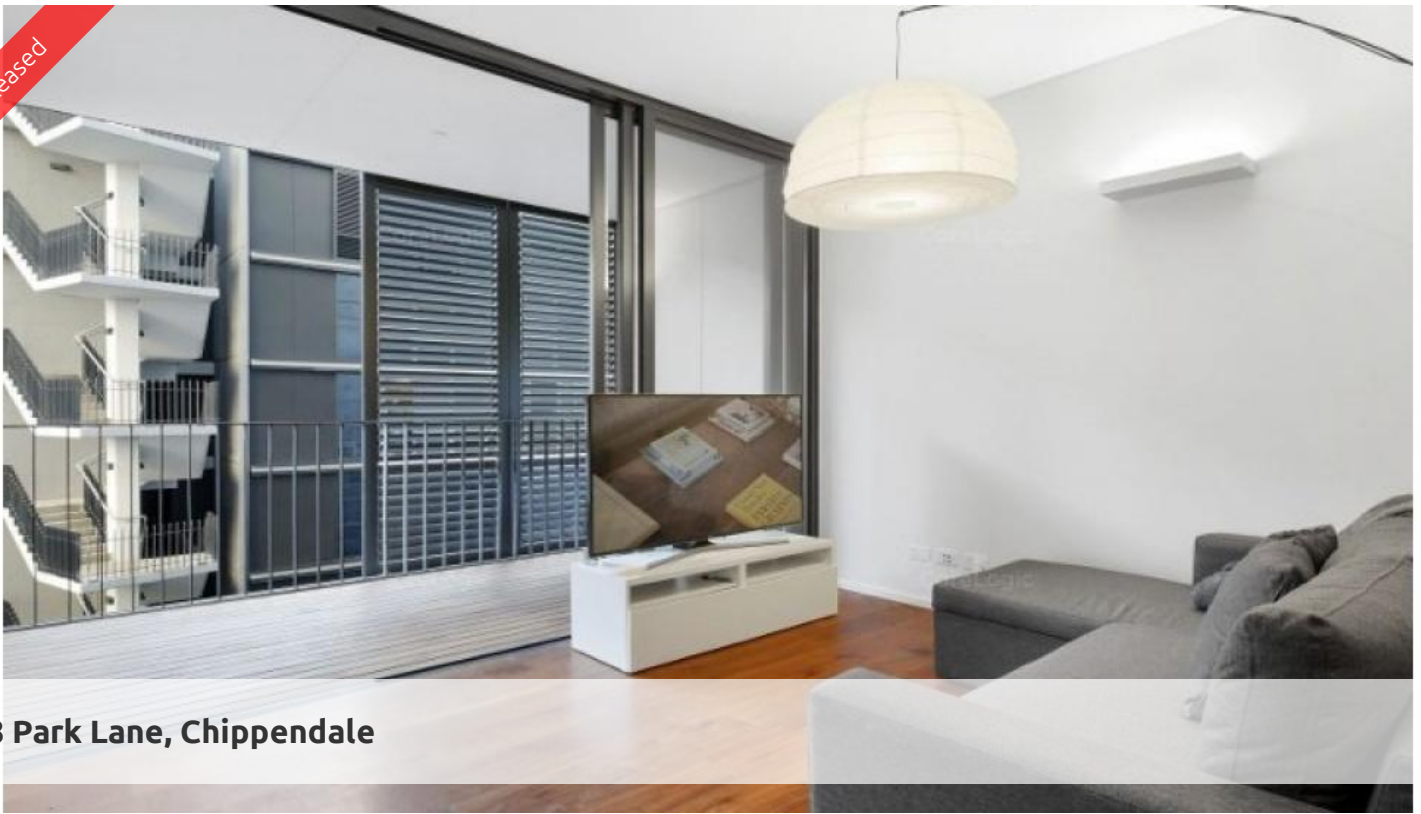


Leased



8 Park Lane, Chippendale



PARTLY FURNISHED ONE BEDROOM APARTMENT

Please meet at our office on 5 Carlton Street, Chippendale a few minutes before to register and inspect.

This spacious one bedroom and study is beautifully presented with polished floor boards and lovely loggia area.

- * Designer kitchen with stainless steel appliances, gas cooking and dishwasher.
- * Open plan living and dining area.
- * Loggia area for entertaining or relaxing.
- * Modern bathroom with rain shower.
- * Good size bedroom with built in robes and study area.

Furniture includes;

- * Couch
- * Coffee Table
- * Dining table
- * Queen size Bed and Mattress

Amazing location in the heart of Central Park, beautiful gardens, lovely facilities, concierge and lots of great restaurants and bars.

For further information or to inspect, please call Nathan Takounlao on 0451 509 605 or 9199 6555.

🛏 1 🚿 1

Price Level 5 | DEPOSIT TAKEN

Property Type Rental

Property ID 5840

Agent Details

William Chen - 0430 026 436
william@greenciff.com.au

Office Details

Greenciff Central Park Office
101/5 Carlton Street Chippendale NSW
2008 Australia
02 9199 6555

greenciff
Inner city specialists