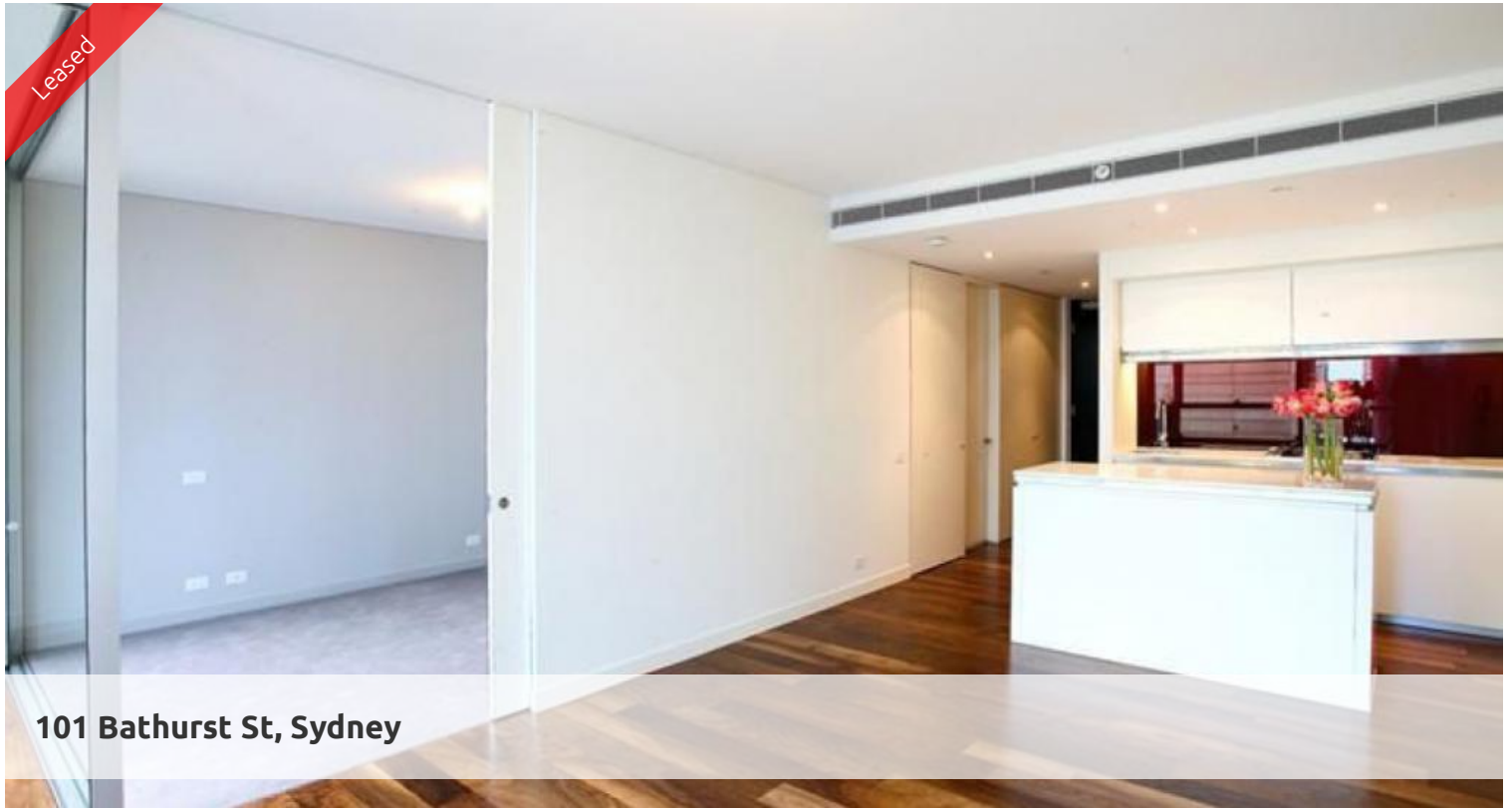


Leased



101 Bathurst St, Sydney



East Facing Delight - spacious and bright

Located in the heart of Sydney's iconic Town Hall precinct, Lumiere at Regent Place is a residential village in the sky.

The apartment features

- Tile flooring throughout except for bedroom
- Roughly 67sqm with built in robe
- Modern kitchen & bathroom facilities
- Internal laundry
- Internal loggia
- Ducted air conditioning
- Full access to Club Lumiere and building facilities

Facilities include access to spectacular indoor/outdoor 50 & 20 metre pool, sauna, spa, gym, function room & 2 cinemas.

During Covid, availabilities of these facilities are managed by building management and as such please adhere to their instructions

The above information provided has been furnished to us by the vendor/s. We have not verified whether or not that information is accurate and do not have any belief in one way or the other in its accuracy. We do not accept any responsibility to any person for its accuracy and do no more than pass it on. All interested parties should make and rely upon their own inquiries in order to determine whether or not this information is in fact accurate.

 1  1

Price

Level 23 | \$700 PW -
DEPOSIT TAKEN

Property Type

Rental

Property ID

5826

Agent Details

Lieu Mai - 0415 797 525
lieu@greenciff.com.au

Office Details

Greenciff Sydney Kent St
Level 10/488 Kent Street Sydney NSW
2000 Australia
02 8823 8818

greenciff
Inner city specialists