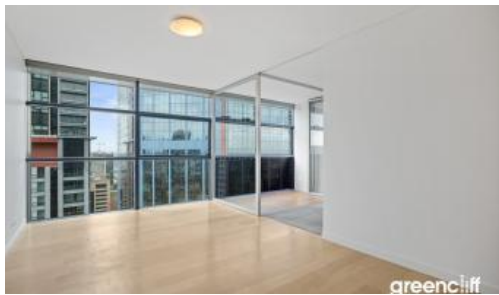




101 Bathurst St, Sydney



LIVE UP HIGH - IN LUMIERE RESIDENCES - freshly painted

Extraordinary Lumiere Residences, Sydney's mid-town becomes a vibrant living quarter through creation of Regent Place, Australia's first vertical village.

The 56-level residential tower with 456 light-filled homes is an extraordinary re-invention of high-rise living.

This apartment features:

- Spacious combined lounge and dining area, views over the city
- Open plan kitchen with European gas cooking top, dishwasher, and oven/microwave, stone benchtop
- Double sized bedroom with built-in wardrobe and a sunroom
- Floor to ceiling windows
- Internal laundry with dryer
- Generous study area
- Air conditioned, intercom system
- Secure parking space

The Lumiere Residences features 2 levels of private residential facilities including a 50 metre swimming pool spanning indoor to outdoor, sauna, spa, steam room, a comprehensive first class gym, yoga/games room, 2 cinemas, meeting area and 24 hour concierge and security.

Living in Lumiere is all about giving residents the distinct advantage of convenience, such as finding something to do as close as "downstairs" in Regent's Place own restaurants, or the city's cinema precinct.

During Covid, availabilities of these facilities are managed by building management

1 1 1

Price Level 40 | \$800 PW -
DEPOSIT TAKEN

Property Type Rental

Property ID 5814

Floor Area 65 m2

Agent Details

Lieu Mai - 0415 797 525
lieu@greenciff.com.au

Office Details

Greenciff Sydney Kent St
Level 10/488 Kent Street Sydney NSW
2000 Australia
02 8823 8818

greenciff
Inner city specialists