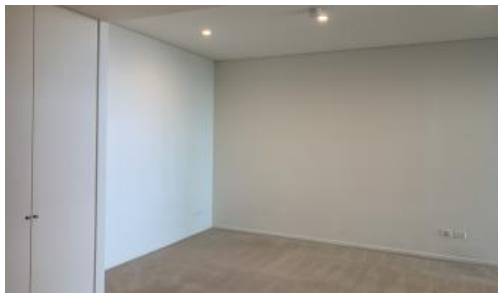




3 Carlton Street, Chippendale



STUDIO APARTMENT IN CENTRAL PARK WITH GREAT VIEWS

Please meet at our office at 5 Carlton St, Chippendale a few minutes before to register.

One Central Park is inner city living at its best!

Enjoy the convenience of shopping, entertainment, dining and transport right at your doorstep. Built around a beautiful park and draped in a living vertical garden, One Central Park is the perfect combination of luxury meeting nature.

Rich in amenities, this Central Park features:

- New luxury apartments with stainless steel appliances
- Security building with 24 hour concierge
- Fitness centre with pool, gymnasium & spa
- 6 star green rated development
- 5 level shopping centre with Woolworths
- City, district or park views from all apartments
- Fridge and washer/dryer included
- More than 30,000sqm of surrounding park and public space.

For further information or to inspect, please contact Nathan Takounlao on 0451 509 605 or 9199 6555.

** images used maybe indicatives only**

The above information provided has been furnished to us by the vendor/s. We have not verified whether or not that information is accurate and do not have any belief in one way or the other in its accuracy. We do not accept any responsibility to any person for its accuracy and do no more than pass it on. All interested parties should make and rely upon their own inquiries in order to determine whether or not this information is in fact accurate.

1 1

Price

Level 14 | DEPOSIT
TAKEN

Property Type

Rental

Property ID

5762

Agent Details

William Chen - 0430 026 436
william@greenciff.com.au

Office Details

Greenciff Central Park Office
101/5 Carlton Street Chippendale NSW
2008 Australia
02 9199 6555

greenciff
Inner city specialists