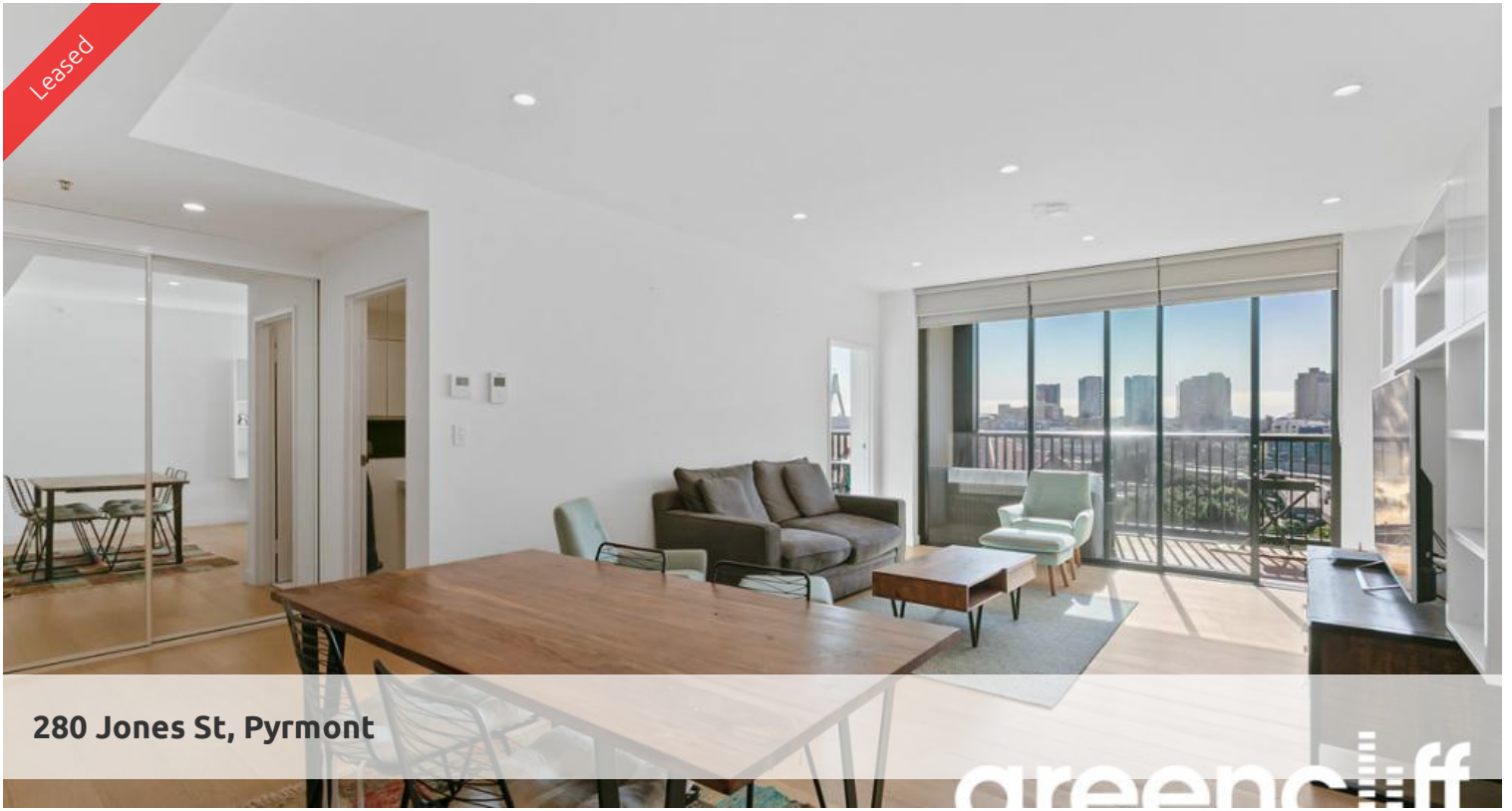


Leased



280 Jones St, Pyrmont

greenciff



MODERN FURNISHED 2 BEDROOM WITH VIEWS OF ANZAC BRIDGE  
Positioned on the 8th floor with a Northerly aspect, comes this furnished 2 bedroom, 2 bathroom, and 1 car space

Enjoying Anzac Bridge and water views, apartment 802 will make a very comfortable home

Features of this executive apartment include -

Ideal north aspect position with plenty of natural light, spacious living and dining area

Double sized bedrooms with built-ins, master with en suite and walk in robe

Reverse cycle air conditioning

Internal laundry including washing machine and dryer

Double glazed windows

Convenient location within walking/riding distance to Wentworth Park Light Rail Station, Sydney Fish Markets, local cafes and parks

🛏 2 🗺 2 🚗 1

**Price** Level 8 | \$900 PW  
**Property Type** Rental  
**Property ID** 5736

#### Agent Details

Lieu Mai - 0415 797 525  
lieu@greenciff.com.au

#### Office Details

Greenciff Sydney Kent St  
Level 10/488 Kent Street Sydney NSW  
2000 Australia  
02 8823 8818

The above information provided has been furnished to us by the vendor/s. We have not verified whether or not that information is accurate and do not have any belief in one way or the other in its accuracy. We do not accept any responsibility to any person for its accuracy and do no more than pass it on. All interested parties should make and rely upon their own inquiries in order to determine whether or not this information is in fact accurate.

greenciff  
Inner city specialists