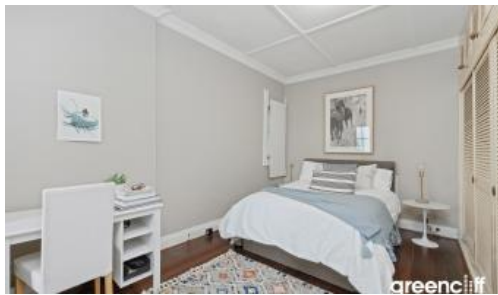


Sold



7/10 Harnett Ave, Mosman



## HARBOURSIDE RETREAT WITH EUROPEAN CHARM SET WITHIN MOSMAN MAYOR'S HISTORIC HOME

This unique residence is redesigned through the subdivision of the first Mosman Mayor's historic home to create space and seamless connection with outdoors. It features spacious living and dining areas, opening to an entertainer's courtyard surrounded by a tranquil garden oasis. Due to its harbourside locale, the residence focuses on relaxed easy care living and includes :

- Separate modern kitchen with Caesar Stone bench tops and stainless steel appliances,
- Lounge with French doors flowing to a private courtyard,
- Queen sized bedroom with built-in wardrobe and courtyard access,
- Enormous tiled bathroom with double vanities and bath,
- Timber flooring throughout the residence,
- Remote control garage, and
- Separate private entrance.

Positioned in the quiet cul-de-sac end of Harnett Avenue and only a short stroll to Mosman Bay, Rowers Club, Reid Park and cafes, it offers a lifestyle in Mosman's most sought after pockets.

For more information or to arrange a viewing, please contact Christina Chong on 0456 617 186.

The above information provided has been furnished to us by the vendor/s. We have not verified whether or not that information is accurate and do not have any belief in one way or the other in its accuracy. We do not accept any responsibility to any person for its accuracy and do no more than pass it on. All interested parties should make and rely upon their own inquiries in order to determine

🛏 1 📶 1 🚗 1 📏 89 m2

<b>Price</b>	SOLD
<b>Property Type</b>	Residential
<b>Property ID</b>	5733
<b>Land Area</b>	89 m2

### Agent Details

Christina Chong - 0456 617 186  
christina@greenciff.com.au

### Office Details

Greenciff Sydney Kent St  
Level 10/488 Kent Street Sydney NSW  
2000 Australia  
02 8823 8818

**greenciff**  
Inner city specialists