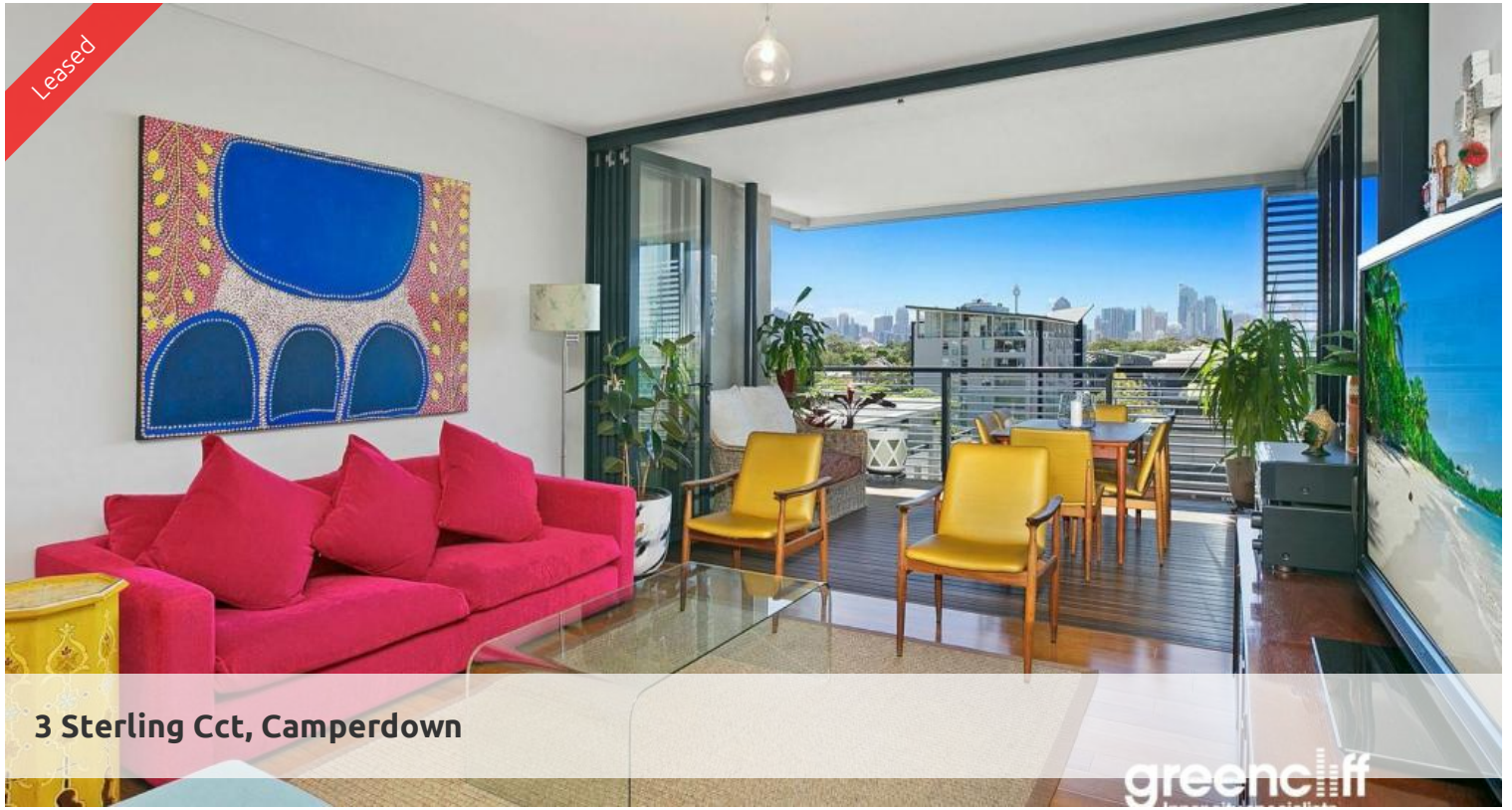


Leased



3 Sterling Cct, Camperdown

greenciff



Well-appointed East facing unit with city views | DEPOSIT PAID

Superb East facing one bedroom apartment perfectly positioned on the 7th floor of the Central building in the sought after "Trio" City Quarter complex.

The apartment features:

- Spacious living area with wooden flooring superbly flowing to generous loggia
- Open plan gas kitchen with Smeg stainless steel appliances
- Natural flow of indoor/outdoor living, ideal for alfresco entertaining
- Large bedroom with built-in wardrobe, light and airy throughout
- internal laundry
- Private bathroom with free standing shower and bath tub.
- Undercover security carspace
- Ducted air conditioning

Being in The City Quarter Complex you will be able to enjoy the free, unlimited access to your choice of a 50 metre outdoor or 25m indoor pool and two gymnasiums. The complex also has 24 hour security, a Japanese restaurant & cafes. Only a 10 minute bus ride to the city or an easy stroll to Tramsheds, Jubilee park, Glebe, RPA hospital, Sydney University, Broadway, Leichhardt and Newtown which are just around the corner.

During Covid, availabilities of these facilities are managed by building management and as such please adhere to their instructions.

For further information or to inspect, please contact Tammy on 0431 511 907 or email: tammy@greenciff.com.au

** images used maybe indicatives only**

🛏 1 🚿 1 🚗 1

Price LEVEL 7 | DEPOSIT PAID
Property Type Rental
Property ID 5731

Agent Details

Tammy (Rungnapa) Kanittanon - 0431 511 907 tammy@greenciff.com.au

Office Details

Greenciff Camperdown Office
Shop 1 1 Sterling Cct Camperdown NSW
2050 Australia
02 8262 8262

greenciff
Inner city specialists

The above information provided has been furnished to us by the vendor/s. We have not verified whether or not that information is accurate and do not have any belief in one way or the other in its accuracy. We do not accept any responsibility to any person for its accuracy and do no more than pass it on. All interested parties should make and rely upon their own inquiries in order to determine