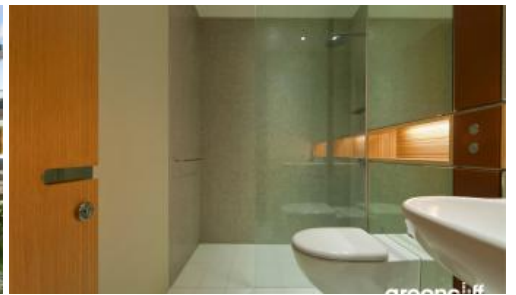
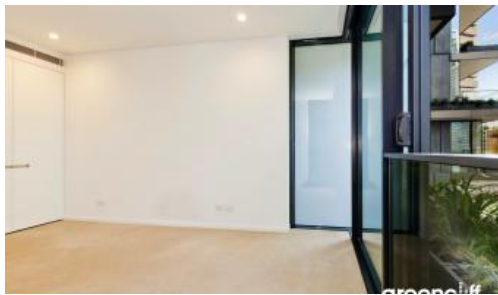


Leased



2 Chippendale Way, Chippendale



WARM & WELCOMING TWO BEDROOM IN CENTRAL PARK

Please meet at our office 101/ 5 Carlton Street, Chippendale a few minutes before to register and inspect.

One Central Park is inner city living at its best!

This 2 bed apartment is the perfect size, with open plan living creating a flow that will enable you to really own the space. Add to this a Neutral colour palette enabling you to really bring your own style. Plenty of storage space and a great sized balcony to enjoy entertaining on.

Enjoy the convenience of shopping, entertainment, dining and transport right at your doorstep. Built around a beautiful park and draped in a living vertical garden, One Central Park is the perfect combination of luxury meeting nature.

Rich in amenities, this Central Park development features:

- Luxury apartments with stainless steel appliances
- Timber flooring
- Security building with 24 hour concierge
- Fitness centre with pool, gymnasium & spa
- 6 star green rated development
- 5 level shopping centre with Woolworths
- Pool views from apartment balcony
- Spacious open plan living
- Fridge and washer/dryer included
- More than 30,000sqm of surrounding park and public space.

For further information or to inspect, please call Nathan Takounlao on 0451 509 605 or 9199 6555.

 2  1  1

Price

Level 10 | DEPOSIT
TAKEN

Property Type

Rental

Property ID

5729

Agent Details

William Chen - 0430 026 436
william@greenciff.com.au

Office Details

Greenciff Central Park Office
101/5 Carlton Street Chippendale NSW
2008 Australia
02 9199 6555

greenciff
Inner city specialists

*** Information is provided as a guide only. Please contact the agent for more details.***