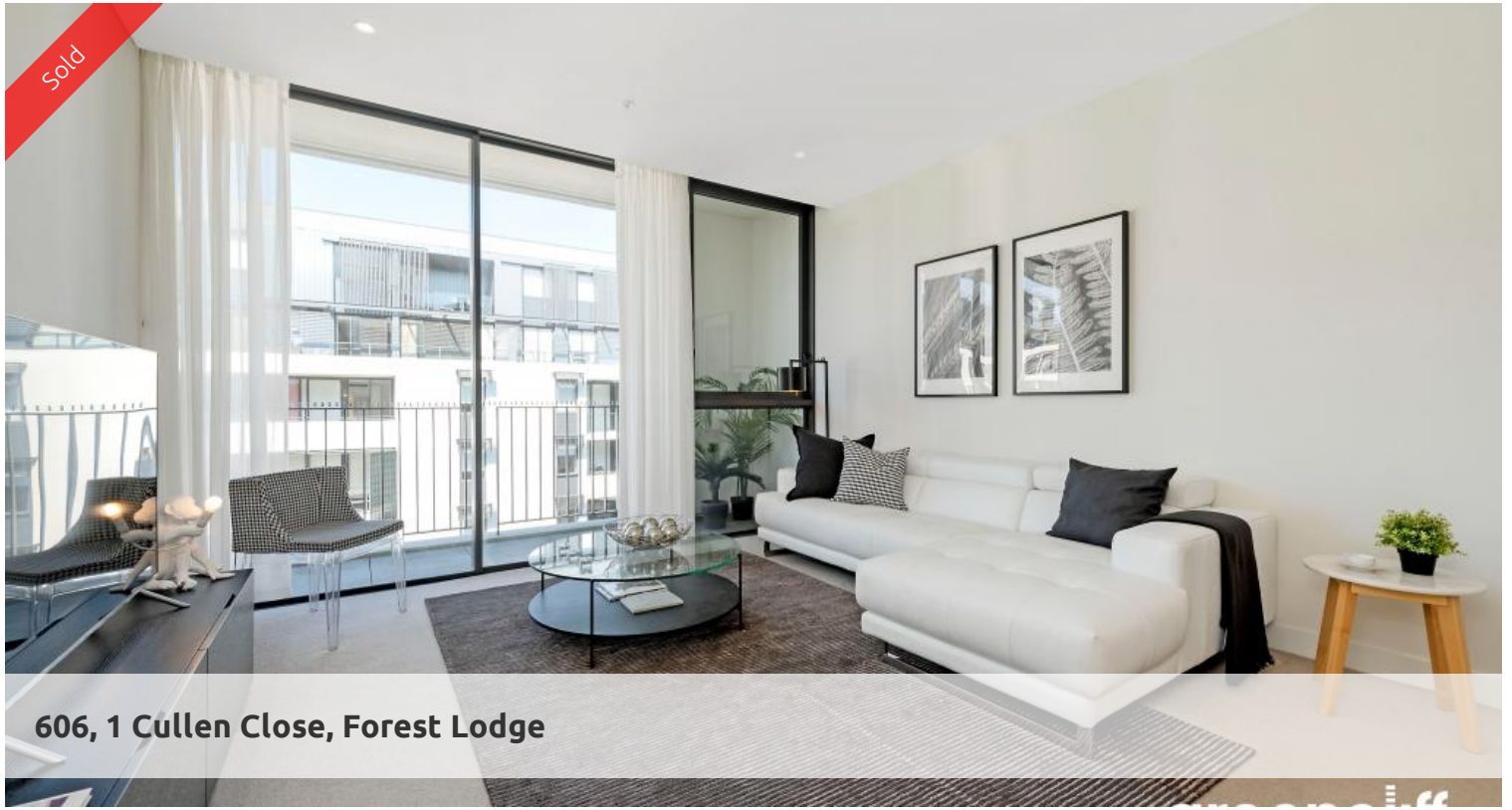


Sold



606, 1 Cullen Close, Forest Lodge



Spacious, Modern Luxury Living!

A rare not to be missed opportunity to own a beautiful 2 bedroom home or an astute investment.

Situated in The Harold Park development this large spacious 2 bedroom property offers the chance to live a lifestyle of luxury and convenience.

Modern kitchen with Miele appliances and ample room for preparing meals and entertaining. Large combined living dining room flowing onto an balcony and modern stylish bathrooms make up the interior of this beautiful property.

A short stroll to the amazing dining options of the "Tram Shreds" or the many and varied cafe's /bars and restaurants Annandale has to offer. Also situated close to public transports, Newtown, RPA, Sydney University, running tracks and dog parks,.

This 2 bedroom 2 bathroom near new modern apartment is a must to inspect.

- Two spacious bedrooms, both with ample built-in wardrobes
- Modern, sleek and stylish bathrooms
- Stone kitchen bench tops with Miele appliances and large fridge space
- Large bedrooms master with direct balcony access
- Spacious living area, with access to entertainers balcony
- Ducted A/C,
- Video intercom
- Internal laundry
- Secure Carspace and storage cage included
- On site Building Manager

🛏 2 📶 2 🚗 1 🏠 94 m2

Price SOLD for \$1,400,000
Property Type Residential
Property ID 5630
Land Area 94 m2

Agent Details

William Chen - 0430 026 436
william@greenciff.com.au
Emlyn Walters - 0405 606 025
emlyn@greenciff.com.au

Office Details

Greenciff Central Park Office
101/5 Carlton Street Chippendale NSW
2008 Australia
02 9199 6555

greenciff
Inner city specialists

The above information provided has been furnished to us by the vendor/s. We have not verified whether or not that information is accurate and do not have any belief in one way or the other in its accuracy. We do not accept any responsibility to any person for its accuracy and do no more than pass it on. All interested parties should make and rely upon their own inquiries in order to determine