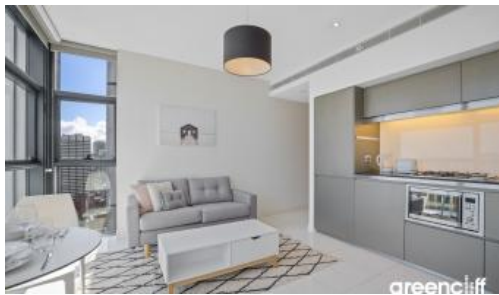




## 101 Bathurst St, Sydney



### Executive Furnished Suite with Darling Harbour Views

Extraordinary Lumiere Residences, Sydney's mid-town becomes a vibrant living quarter through creation of Regent Place, Australia's first vertical village

Living in Lumiere is all about giving residents the distinct advantage of convenience, such as finding something to do as close as "downstairs" in Regent's Place own restaurants and shops, or the city's cinema precinct

The 56-level residential tower with 456 light-filled homes is an extraordinary re-invention of high-rise living

This west facing executive furnished suite apartment features:

- Modern furnishing
- Stone flooring through out
- Roughly 42 sqm with built-in robe
- Modern kitchen and bathroom facilities
- Internal laundry
- Ducted air conditioning
- Full access to Club Lumiere facilities

The Lumiere Residences features 2 levels of private residential facilities including a 50 metre swimming pool spanning indoor to outdoor, a comprehensive first class gym, sauna, spa, steam room, yoga/games room, 2 cinemas, meeting area and 24 hour concierge and security.

During Covid, availabilities of these facilities are managed by building management and as such please adhere to their instructions.

The above information provided has been furnished to us by the vendor/s. We have not verified whether or not that information is accurate and do not have any belief in one way or the other in its accuracy. We do not accept any responsibility to any person for its accuracy and do no more than pass it on. All interested parties should make and rely upon their own inquiries in order to determine whether or not this information is in fact accurate

🛏 1 📶 1

**Price** Level 42 | \$630 PW - Deposit Taken

**Property Type** Rental

**Property ID** 5597

#### Agent Details

Lieu Mai - 0415 797 525  
lieu@greenciff.com.au

#### Office Details

Greenciff Sydney Kent St  
Level 10/488 Kent Street Sydney NSW  
2000 Australia  
02 8823 8818

