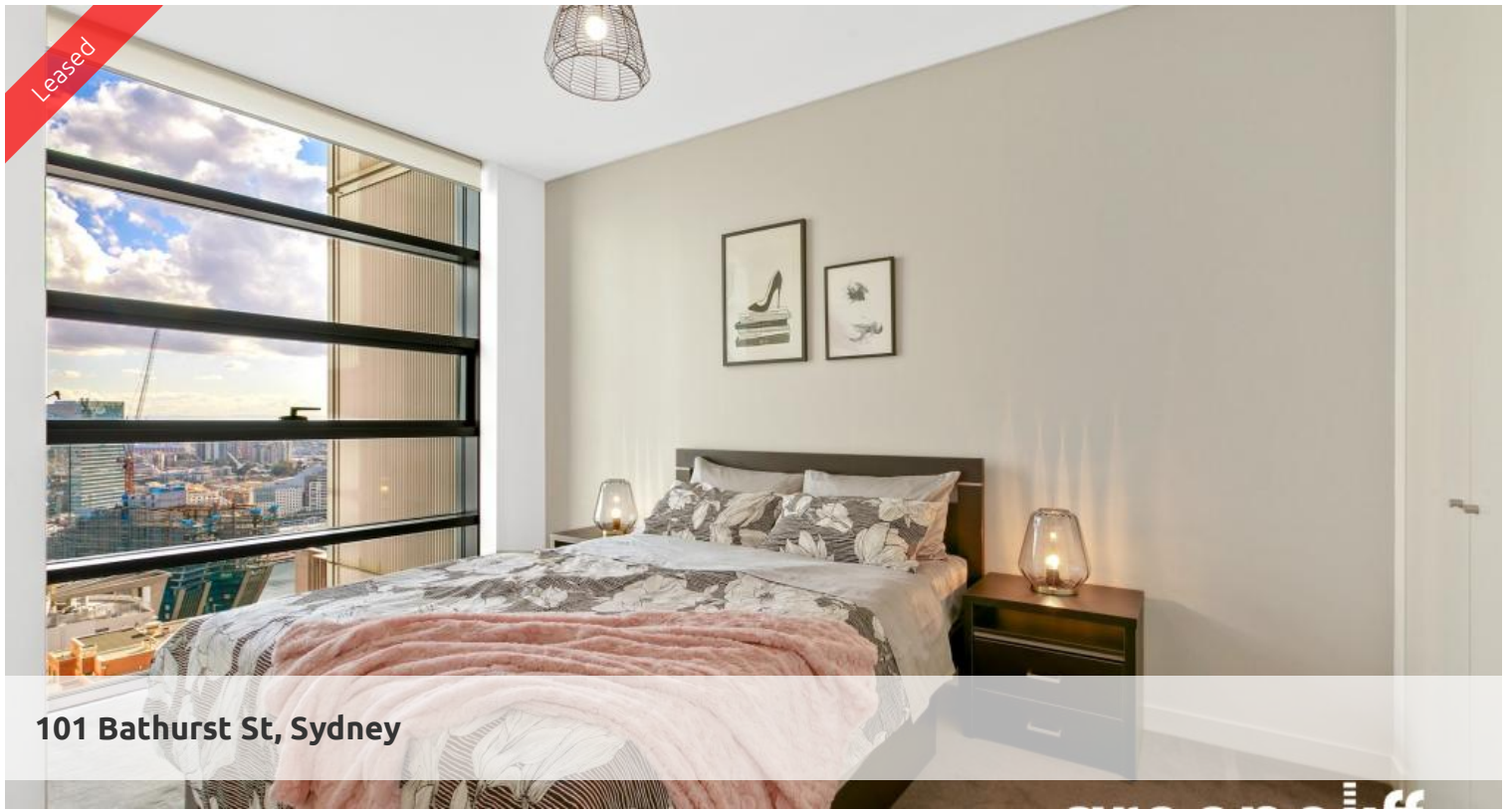


Leased



101 Bathurst St, Sydney



## Furnished 1 bedroom overlooking Darling Harbour

Extraordinary Lumiere Residences, Sydney's mid-town becomes a vibrant living quarter through creation of Regent Place, Australia's first vertical village. The 56-level residential tower with 456 light-filled homes is an extraordinary re-invention of high-rise living.

This apartment features:-

- Spacious combined lounge and dining area
- Open plan kitchen with European gas cooking, Stone benchtop and drawer dishwasher
- Double sized bedroom with built-in wardrobes
- Floor to ceiling windows
- Internal laundry with dryer
- Generous study area
- Secure parking space

The Lumiere Residences features 2 levels of private residential facilities including a 50 metre swimming pool spanning indoor to outdoor, a comprehensive first class gym, yoga/games room, 2 cinemas, meeting area and 24 hour concierge/security. Living in Lumiere is all about giving residents the distinct advantage of convenience, such as finding something to do as close as "downstairs" in Regent's Place own restaurants, or the city's cinema precinct.

During Covid, availabilities of these facilities are managed by building management and as such please adhere to their instructions.

🛏 1 📶 1 🚗 1

**Price** Level 40 | \$850 PW - Deposit Taken  
**Property Type** Rental  
**Property ID** 5508

### Agent Details

Lieu Mai - 0415 797 525  
lieu@greenciff.com.au

### Office Details

Greenciff Sydney Kent St  
Level 10/488 Kent Street Sydney NSW  
2000 Australia  
02 8823 8818

**greenciff**  
Inner city specialists