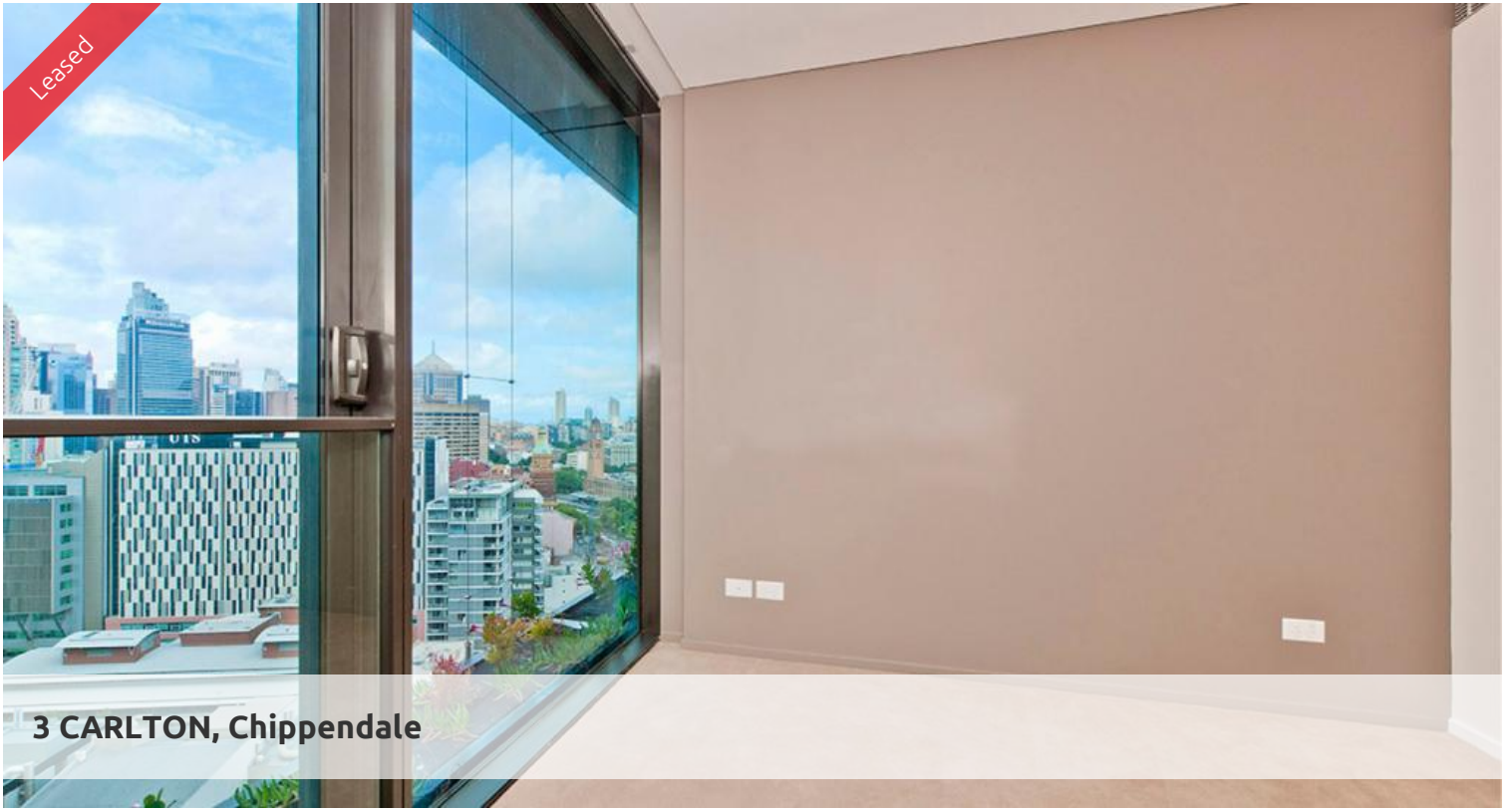


Leased



3 CARLTON, Chippendale



DUAL KEY ONE BEDROOM IN CENTRAL PARK WITH BILLS INCLUDED

Please meet at our office at 5 Carlton St, Chippendale a few minutes before to register and inspect.

One Central Park is inner city living at its best!

Enjoy the convenience of shopping, entertainment, dining and transport right at your doorstep. Built around a beautiful park and draped in a living vertical garden, One Central Park is the perfect combination of luxury meeting nature.

Rich in amenities, this Central Park features:

- New luxury apartments with stainless steel appliances
- Security building with 24 hour concierge
- Fitness centre with pool, gymnasium & spa
- 6 star green rated development
- 5 level shopping centre with Woolworths
- City, district or park views from all apartments
- Fridge and washer/dryer included (shared)
- More than 30,000sqm of surrounding park and public space.
- Dual key, Gas/electricity/water included in rent.

For further information or to inspect, please contact Nathan Takounlao on 0451 509 605.

** images used maybe indicatives only**

1 1 1

Price

Level 10 | DEPOSIT
TAKEN

Property Type

Rental

Property ID

5488

Agent Details

William Chen - 0430 026 436
william@greenciff.com.au

Office Details

Greenciff Central Park Office
101/5 Carlton Street Chippendale NSW
2008 Australia
02 9199 6555

greenciff
Inner city specialists