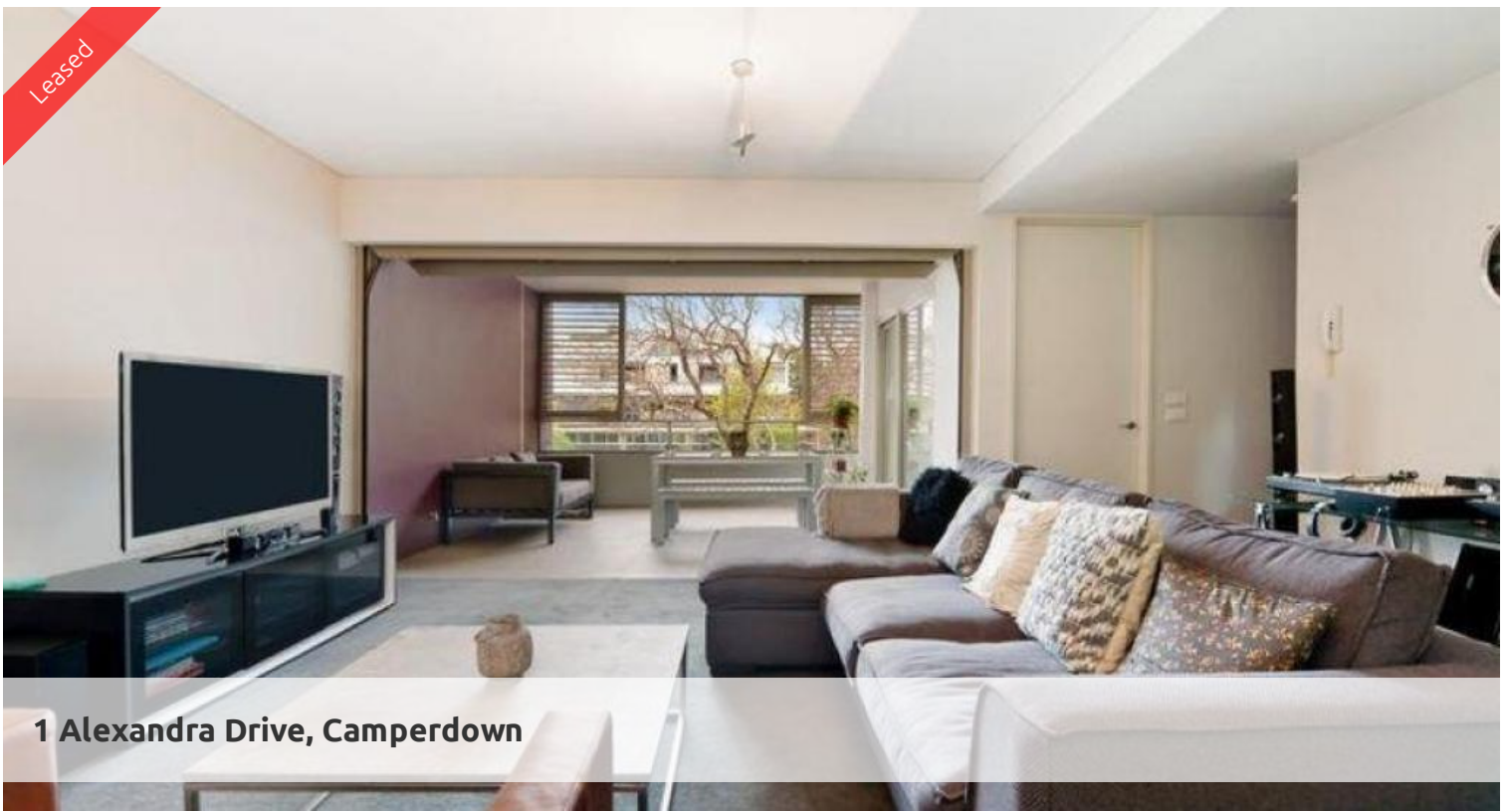


Leased



1 Alexandra Drive, Camperdown



"VIE 3" TWO BEDROOM APARTMENT WITH CAR SPACE

Fabulous two bedroom apartment situated within Vie 3 offering a sophisticated lifestyle in a convenient location. Features include:

- New carpets and new paint
- Spacious living space with balcony, lovely leafy aspect
- Superb flow of indoor/outdoor living, perfect for entertaining
- Gourmet open plan kitchen with gas cook top & dishwasher
- Generous bedrooms, master with ensuite bathroom, built in robes
- Internal laundry with dryer, undercover security car space

Being in The City Quarter Complex you will be able to enjoy the free, unlimited access to your choice of a 50 metre outdoor or 25m indoor pool and two gymnasiums. The complex also has 24 hour security, a Japanese restaurant & cafes. Only a 10 minute bus ride to the city or an easy stroll to Tramsheds, Jubilee park, Glebe , Broadway, Leichhardt and Newtown which are just around the corner.

For further information or to inspect, please contact Roxanne on 0481 860 123 or email:

roxanne@greencliff.com.au

The above information provided has been furnished to us by the vendor/s. We have not verified whether or not that information is accurate and do not have any belief in one way or the other in its accuracy. We do not accept any responsibility to any person for its accuracy and do no more than pass it on. All interested parties should make and rely upon their own inquiries in order to determine whether or not this information is in fact accurate.

🛏️ 2 📶 2 🚗 1

Price LEVEL 5 | DEPOSIT TAKEN
Property Type Rental
Property ID 5472

Agent Details

Tammy (Rungnapa) Kanittanon - 0431 511 907 tammy@greencliff.com.au
Michelle Kilala - 0419 777 239 michelle@greencliff.com.au

Office Details

Greencliff Camperdown Office
Shop 1 1 Sterling Cct Camperdown NSW
2050 Australia
02 8262 8262

greenciff
Inner city specialists