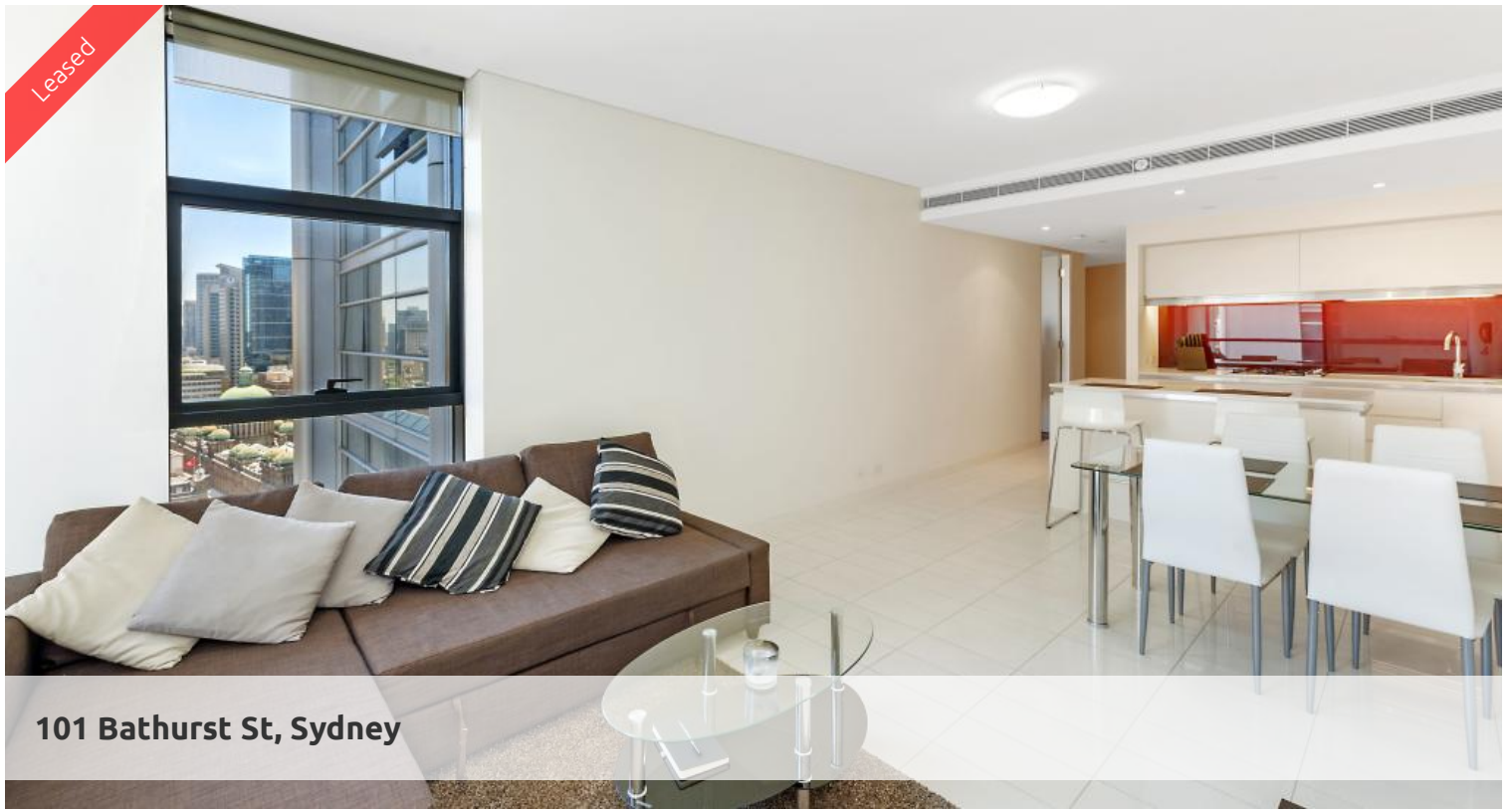


Leased



101 Bathurst St, Sydney



Darling Harbour View - Unfurnished 1 Bedroom

This unfurnished one bedroom features modern and spacious combined lounge and dining areas, state of the art modern kitchen with gas cooking top, microwave/oven in one and dishwasher, grand bathroom, internal laundry with dryer, large storage cage.

Located in the heart of Sydney's iconic Town Hall precinct, Lumiere at Regent Place is a residential village in the sky.

Consisting of an elegant glass tower floating above a new retail & commercial arcade, Regent Place. Soaring 56 levels, Lumiere Residences, features a collection of light-filled and spacious homes that embrace the historic surrounds. A living innovation in every sense, Lumiere at Regent Place is set to transform this prestigious mid-town precinct of Sydney into a vibrant living quarter.

The above information provided has been furnished to us by the vendor/s. We have not verified whether or not that information is accurate and do not have any belief in one way or the other in its accuracy. We do not accept any responsibility to any person for its accuracy and do no more than pass it on. All interested parties should make and rely upon their own inquiries in order to determine whether or not this information is in fact accurate.

 1  1

Price

Level 39 | \$700 PW - Deposit Taken

Property Type

Rental

Property ID5286

Agent Details

Lieu Mai - 0415 797 525

lieu@greenciff.com.au

Office Details

Greenciff Sydney Kent St

Level 10/488 Kent Street Sydney NSW

2000 Australia

02 8823 8818

greenciff
Inner city specialists