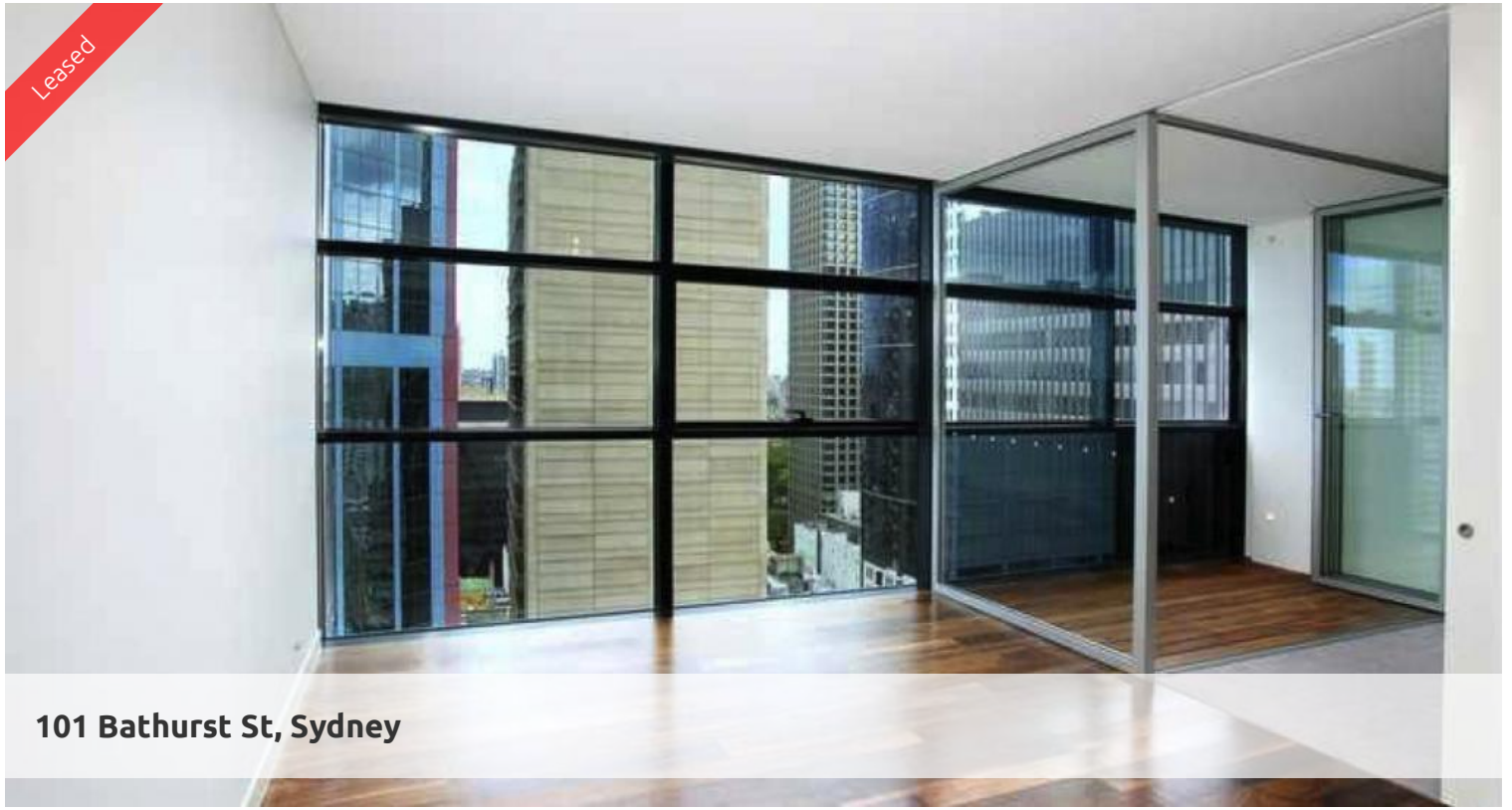


Leased



101 Bathurst St, Sydney



FABULOUS EXECUTIVE APARTMENT - EAST FACING

Stunning light filled, East facing one bedroom unfurnished apartment available in the sought after Lumiere building.

The apartment features

- Roughly 65sqm with built in robe
- Modern kitchen & bathroom facilities
- Internal laundry
- Ducted air conditioning
- Study nook
- Internal loggia
- Secure parking space & storage cage
- Full access to Club Lumiere and building facilities

Facilities include access to spectacular indoor/outdoor 50 & 20 metre pool, sauna, spa, gym, function room & 2 cinemas.

*Photographs used may be indicative.

The above information provided has been furnished to us by the vendor/s. We have not verified whether or not that information is accurate and do not have any belief in one way or the other in its accuracy. We do not accept any responsibility to any person for its accuracy and do no more than pass it on. All interested parties should make and rely upon their own inquiries in order to determine whether or not this information is in fact accurate.

 1  1  1

Price

Level 39 | \$700 PW - Deposit Taken

Property Type

Rental

Property ID5254

Agent Details

Lieu Mai - 0415 797 525

lieu@greenciff.com.au

Office Details

Greenciff Sydney Kent St
Level 10/488 Kent Street Sydney NSW
2000 Australia
02 8823 8818

greenciff
Inner city specialists