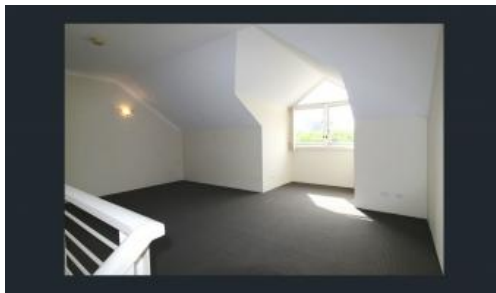
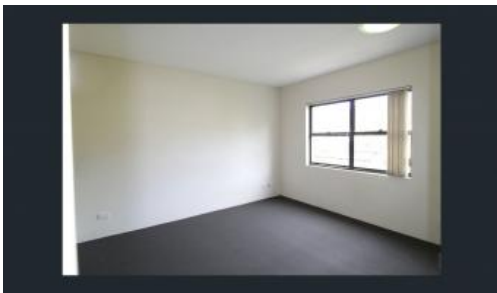


Leased



## 11 Wigram Lane, Glebe



### Unique 2 Bedroom Loft Style Apartment

Due to COVID19 masks must be worn at all times whilst attending our open homes.

Showcasing oasis-style grounds of the much sort after Glebe Gardens' this 2 bedroom loft style apartment offers a spectacular 25m outdoor swimming pool and quality gym all at your door step!

Free flowing interiors, well equipped kitchen with a tranquil aspect this home wont last.

Features include:

- Double bedrooms with built ins overlooking a tranquil aspect
- Contemporary kitchen with gas cooking, dishwasher and granite bench tops
- Spacious combined living/dining leading to the well sized balcony
- Secure undercover car space, intercom, air conditioning
- Modern bathroom with bathtub, concealed laundry and ensuite to main bedroom
- Located in the beautifully maintained Glebe Gardens' complex
- Within close proximity to Tramsheds, Blackwattle Bay, Light Rail, Glebe Markets, UTS, Sydney University, RPAH and CBD.

Further information please contact Roxanne Tran on 0481 860 123 or email [roxanne@greencliff.com.au](mailto:roxanne@greencliff.com.au)

The above information provided has been furnished to us by the vendor/s. We have not verified whether or not that information is accurate and do not have any belief in one way or the other in its accuracy. We do not accept any responsibility to any person for its accuracy and do no more than pass it on. All interested parties should make and rely upon their own inquiries in order to determine whether or not this information is in fact accurate.

 2  2  1

**Price**

TOP LEVEL | DEPOSIT  
TAKEN

**Property  
Type**

Rental

**Property ID** 5239

### Agent Details

Tammy (Rungnapa) Kanittanon - 0431  
511 907 [tammy@greencliff.com.au](mailto:tammy@greencliff.com.au)  
Michelle Kilala - 0419 777 239  
[michelle@greencliff.com.au](mailto:michelle@greencliff.com.au)

### Office Details

Greencliff Camperdown Office  
Shop 1 1 Sterling Cct Camperdown NSW  
2050 Australia  
02 8262 8262

**greenc**iff  
Inner city specialists