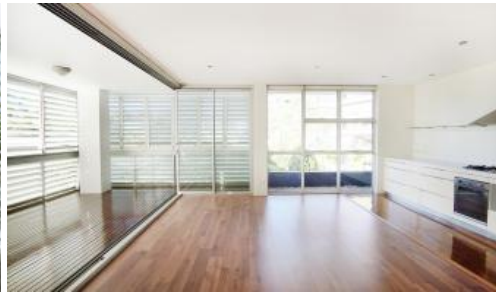


Leased



4 Alexandra Dr, Camperdown



"AQUILON" NORTH FACING TWO BEDROOM APARTMENT!

Due to COVID19 masks must be worn at all times whilst attending our open homes.

Perfectly positioned within sought after "Aquilon" is this lovely north facing two bedroom apartment. Features include:

- Ultra modern open plan kitchen, spacious living area
- Spacious timber decked loggia, ideal for alfresco dining
- Generous bedrooms, both with built-in wardrobes
- Two sleek bathrooms, en-suite off master bedroom
- Light and airy throughout, internal laundry facilities
- Security building with lift and security car space

Set in the popular City Quarter complex, boasting access to your choice of 50 metre outdoor or 25m indoor pool and two gymnasiums.

The complex also has 24 hour security, Japanese restaurant, cafés and a convenience store. All within ten minutes from Glebe, Tramsheds, Jubilee Park, Broadway, Leichhardt, Sydney University and the CBD.

For further information or to inspect, please contact Roxanne on 0481 860 123 or email:

roxanne@greenciff.com.au

The above information provided has been furnished to us by the vendor/s. We have not verified whether or not that information is accurate and do not have any belief in one way or the other in its accuracy. We do not accept any responsibility to any person for its accuracy and do no more than pass it on. All interested parties should make and rely upon their own inquiries in order to determine whether or not this information is in fact accurate.

 2  2  1

Price \$800 | LEASED AT FIRST OPEN

Property Type Rental

Property ID 5220

Agent Details

Tammy (Rungnapa) Kanittanon - 0431 511 907 tammy@greenciff.com.au
Michelle Kilala - 0419 777 239 michelle@greenciff.com.au

Office Details

Greenciff Camperdown Office
Shop 1 1 Sterling Cct Camperdown NSW
2050 Australia
02 8262 8262

greenciff
Inner city specialists