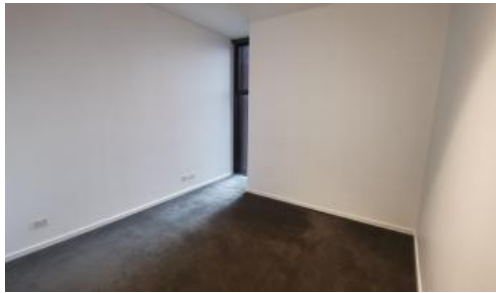


Leased



8 Central Park Ave, Chippendale



## WARM AND WELCOMING 1 BED IN CENTRAL PARK

**Please meet at our office 101/5 Carlton Street, Chippendale a few minutes before to register and inspect.**

**“Connor is a balance of location and surroundings, opportunity and innovation. Both modern and warm, contemporary and inviting, It is supremely comfortable nestled on the edge of old and new.”**

Designed by Smart Design Studio, Connor offers a selection of 178 impeccably designed apartments.

Nestled in the heart of Chippendale, Connor is amongst fashionable retail outlets, a Woolworths supermarket and various cafes and eateries including the impressive new eating precinct Spice Alley on Kensington Lane.

Moments to Central station, buses and surrounding Universities makes living at Central Park the ultimate in downtown living.

The apartments boast intelligent and lifestyle-savvy interiors, features

- Ducted air conditioning
- Smart lighting system
- Loggia for indoor/outdoor living
- Fridge and washer/dryer included
- European kitchen appliances/stone bench tops
- The latest bathroom fittings and design
- Tiled flooring to the living areas/carpeted bedrooms
- West facing aspect
- Security intercom system
- Gas included with rent

### Connor offers

Cardio Room –A fully equipped davlit cardio gym

🛏 1 🚿 1

**Price** Level 3 | DEPOSIT TAKEN

**Property Type** Rental

**Property ID** 5213

### Agent Details

William Chen - 0430 026 436

[william@greenciff.com.au](mailto:william@greenciff.com.au)

### Office Details

Greenciff Central Park Office  
101/5 Carlton Street Chippendale NSW  
2008 Australia  
02 9199 6555

**greenciff**  
Inner city specialists