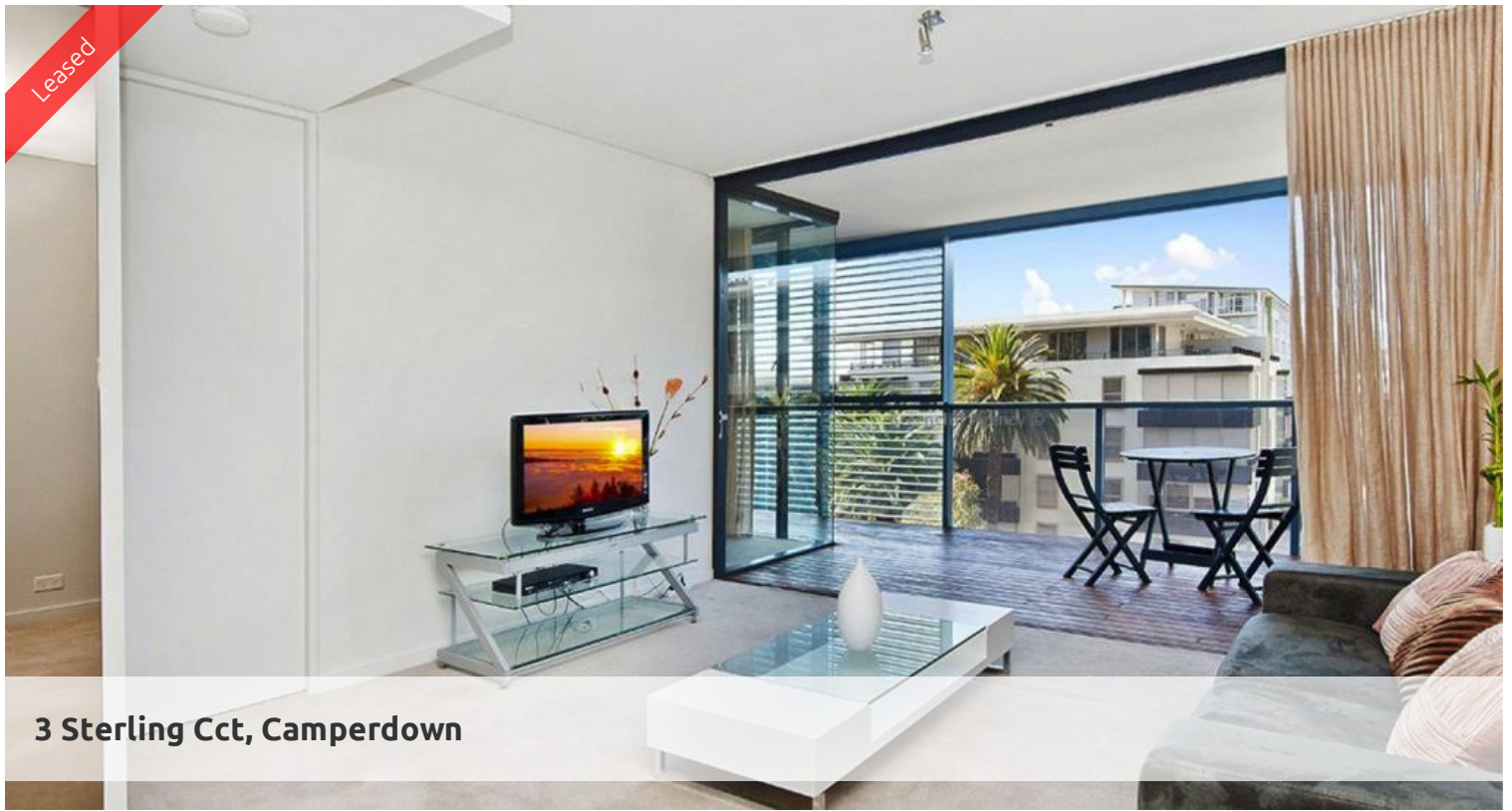
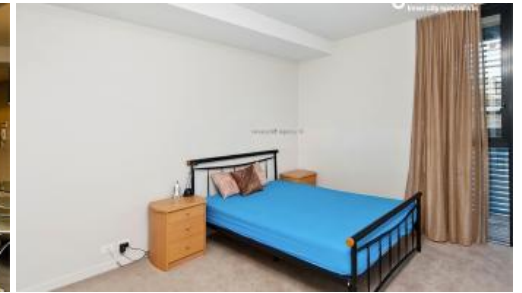


Leased



### 3 Sterling Cct, Camperdown



#### ONE BEDROOM APARTMENT IN TRIO WITH EAST FACING

Due to COVID19 masks must be worn at all times whilst attending our open homes. **All applicants must register for Open Home Inspections - <https://forms.gle/2rjT7zDoBWdHTE4f6>**

Occupying an elevated site on the corner of Booth Street and Pyrmont Bridge Road, Camperdown, Trio is a bold and brilliant addition to the landscape.

Trio combines the cosmopolitan culture and accessibility of the Inner West with all the benefits of living spaces designed for the most modern of lifestyles.

Sculptural gardens infiltrate the foyer, meshing the building with its environment. Inside the story is equally modern, loggias which enhance and add flexibility to the open plan.

Trio is just a 10 minutes bus ride to Sydney CBD, with major universities, RPA Hospital, Broadway Shopping Centre, Annandale shopping village, Glebe, Tramsheds, Jubilee Park and transport all within walking distance.

Apartment features:

- Spacious living area boasting tranquil leafy outlook
- Ultra modern open plan kitchen with gas cook top and dishwasher
- Private loggia with timber decking, ideal for alfresco entertaining
- Large bedroom with built-in wardrobe, light and airy throughout
- Dedicated study space, ideal for home office, internal laundry
- Dual access bathroom with separate bath and shower
- Undercover security carspace
- Ducted air conditioning

Enjoy unlimited access to your choice of a 50 metre outdoor or 25m indoor pool and two gymnasiums. The complex also has 24 hour security, a Japanese restaurant and

🛏 1 📶 1 🚗 1

**Price**

Level 5 | LEASED AT FIRST OPEN!

**Property Type**

Rental

**Property ID** 5188

#### Agent Details

Tammy (Rungnapa) Kanittanon - 0431 511 907 [tammy@greenciff.com.au](mailto:tammy@greenciff.com.au)  
Michelle Kilala - 0419 777 239 [michelle@greenciff.com.au](mailto:michelle@greenciff.com.au)

#### Office Details

Greenciff Camperdown Office  
Shop 1 1 Sterling Cct Camperdown NSW  
2050 Australia  
02 8262 8262

**greenciff**  
Inner city specialists