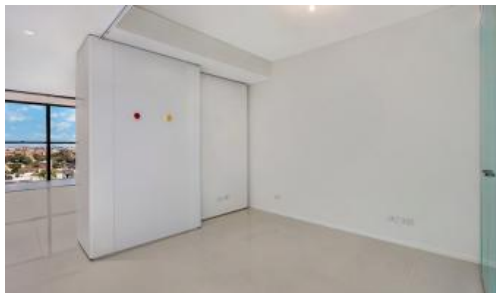


Sold



1902, 18 Park Lane, Chippendale



One Bed Suite with park view For Sale

Conveniently located in Central Park, the property is a short stroll to a collection of shopping, entertainment, dining, bars and galleries.

Rich in amenities, The MARK building features:

- High floor to glass ceiling
- Enclosed balcony
- Built-in wardrobes
- Luxury modern kitchen with stainless steel appliances
- Secure building with 24-hour concierge
- Fitness centre with pool, gymnasium & spa
- Pets allowed

Note: separate car space is available to buy or to rent.

Outgoings per quarter (approx.):

- Strata fees \$1,750
- Council rates \$250
- Water rates \$250

For more information or to arrange a viewing, please contact William Chen of Greencliff Realty on 0430 026 436

The above information provided has been furnished to us by the vendor/s. We have not verified whether or not that information is accurate and do not have any belief in one way or the other in its accuracy. We do not accept any responsibility to any person for its accuracy and do no more than pass it on. All interested parties should make and rely upon their own inquiries in order to determine whether or not this information is in fact accurate.

 1  1

Price	SOLD
Property Type	Residential
Property ID	5174

Agent Details

William Chen - 0430 026 436
william@greencliff.com.au
Danny Yeung - 0451 836 388
danny@greencliff.com.au

Office Details

Greencliff Central Park Office
101/5 Carlton Street Chippendale NSW
2008 Australia
02 9199 6555

greenc  **ff**
Inner city specialists