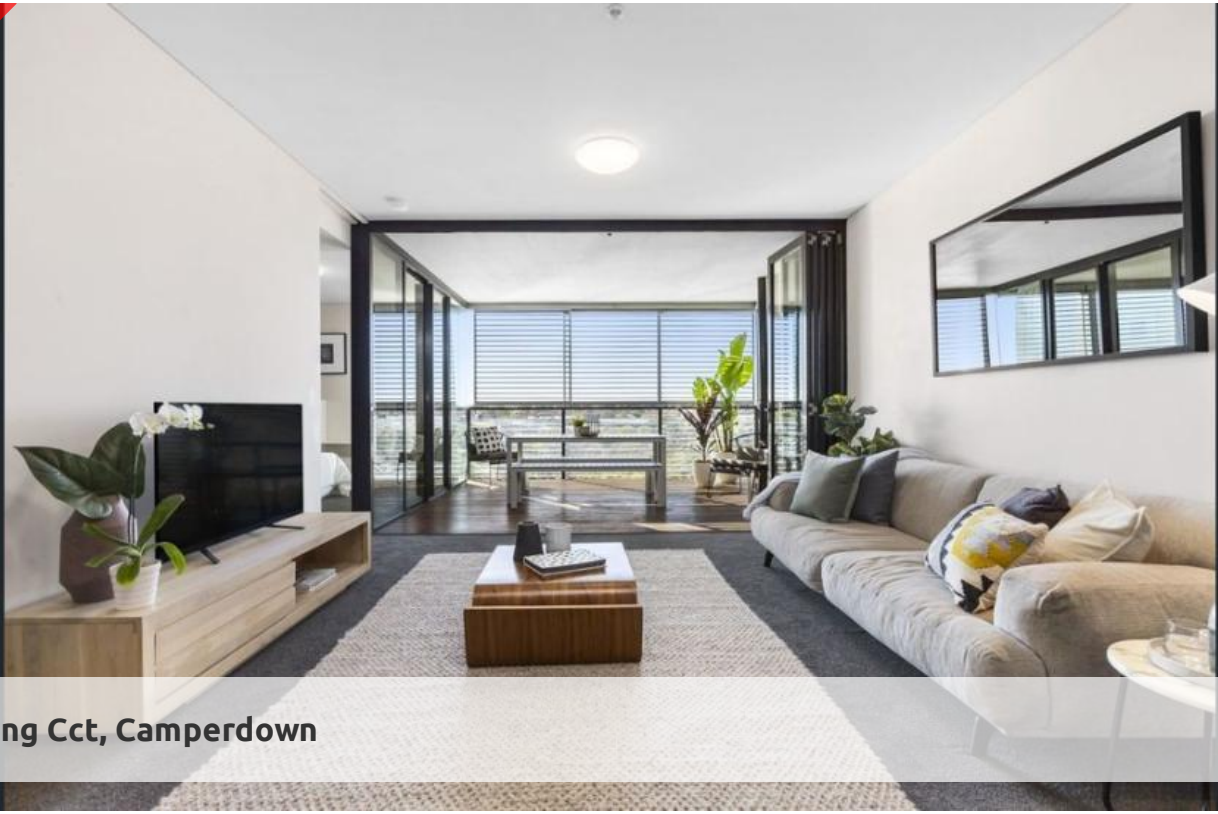


Leased



5 Sterling Cct, Camperdown



RESORT STYLE 1BED WITH STUDY PARKING

Occupying an elevated site on the corner of Booth Street and Pyrmont Bridge Road, Camperdown, Trio is a bold and brilliant addition to the landscape.

Trio combines the cosmopolitan culture and accessibility of the Inner West with all the benefits of living spaces designed for the most modern of lifestyles.

Sculptural gardens infiltrate the foyer, meshing the building with its environment. Inside the story is equally modern, loggias which enhance and add flexibility to the open plan.

Trio is just a 10 minutes bus ride to Sydney CBD, with major universities, RPA Hospital, Broadway Shopping Centre, Annandale shopping village and transport all within walking distance.

Apartment features: -

- Spacious living area boasting tranquil leafy outlook
- Ultra modern open plan kitchen with gas cook top and dishwasher
- Private loggia with timber decking, ideal for alfresco entertaining
- Large bedroom with built-in wardrobe, light and airy throughout
- Dedicated study space, ideal for home office, internal laundry
- Dual access bathroom with separate bath and shower
- Undercover security car space
- Ducted air conditioning

Enjoy unlimited access to your choice of a 50m outdoor or 25m indoor pool and two gymnasiums. The complex also has 24 hour security, a Japanese restaurant and cafes.

For more information or arrange for private viewing, please contact Roxanne on 0481 860 123.

🛏 1 📶 1 🚗 1

Price Level 3 | DEPOSIT TAKEN

Property Type Rental

Property ID 5152

Agent Details

Tammy (Rungnapa) Kanittanon - 0431

511 907 tammy@greenciff.com.au

Michelle Kilala - 0419 777 239

michelle@greenciff.com.au

Office Details

Greenciff Camperdown Office

Shop 1 1 Sterling Cct Camperdown NSW

2050 Australia

02 8262 8262

greenciff
Inner city specialists