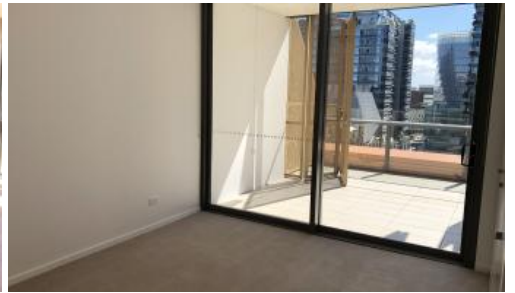


Leased



81 O'connor St, Chippendale



2 BEDROOMS IN CENTRAL PARK WITH PARK VIEW

Please meet at our office on 5 Carlton Street, Chippendale a few minutes before to register and inspect.

The final building of Central Park is now complete offering all residents a unique lifestyle surrounded by parks and gardens with a large shopping complex, movie theatre and sitting right next to Spice Alley and Kensington Street. You have everything at your door and only moments from Sydney CBD. Wonderland is a beautiful building full of character and style the apartments are sleek, modern are generous in size.

- * Large open plan living, dining and kitchen.
- * Large balcony with park view.
- * Sleek kitchen with induction cooking and integrated dishwasher.
- * Large terrace perfect for entertaining and relaxing.
- * Stylish bathroom with rain shower. Bath in ensuite.
- * Internal laundry.
- * North facing aspect
- * Ample amount of storage and cupboard space

For further information or to inspect, please call Renee Sun on 0405 822 430.

** images used maybe indicatives only**

The above information provided has been furnished to us by the vendor/s. We have not verified whether or not that information is accurate and do not have any belief in one way or the other in its accuracy. We do not accept any responsibility to any person for its

🛏 2 🗺 2 🚗 1

Price Level 8 | \$800 PW
Property Type Rental
Property ID 4931

Agent Details

William Chen - 0430 026 436
william@greycliff.com.au
Daniel Ho - 0424 089 868
daniel@greycliff.com.au

Office Details

Greycliff Central Park Office
101/5 Carlton Street Chippendale NSW
2008 Australia
02 9199 6555

greenc  **ff**
Inner city specialists