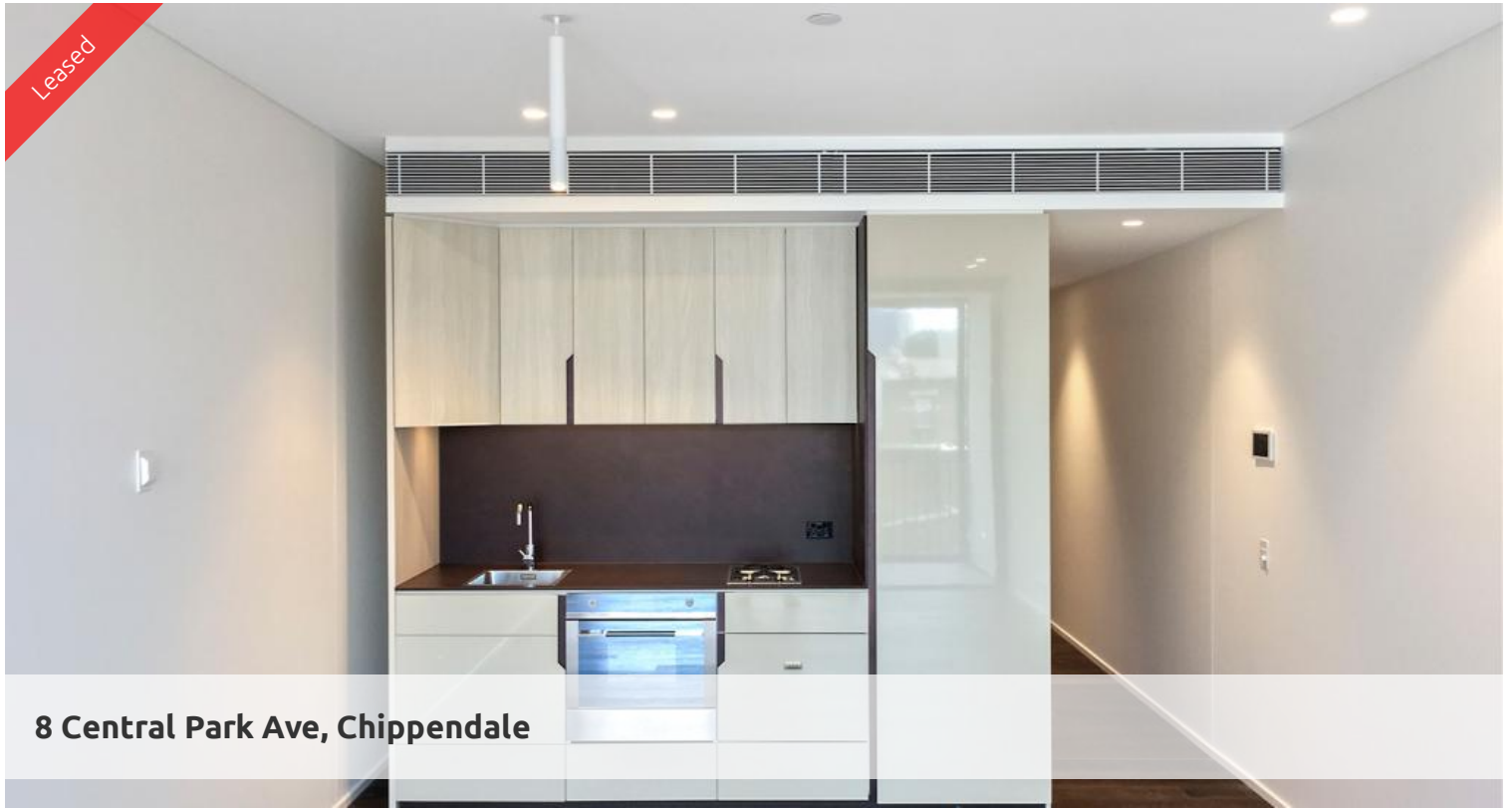
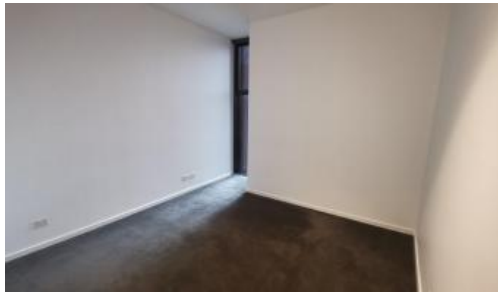


Leased



8 Central Park Ave, Chippendale



LARGE OPEN PLAN ONE BEDROOM IN CONNOR

Please meet at our office 5 Carlton Street, Chippendale a few minutes before to register and inspect.

“Connor is a balance of location and surroundings, opportunity and innovation. Both modern and warm, contemporary and inviting, It is supremely comfortable nestled on the edge of old and new.”

Designed by Smart Design Studio, Connor offers a selection of 178 impeccably designed apartments.

Nestled in the heart of Chippendale, Connor is amongst fashionable retail outlets, a Woolworths supermarket and various cafes and eateries including the impressive new eating precinct Spice Alley on Kensington Lane.

Moments to Central station, buses and surrounding Universities makes living at Central Park the ultimate in downtown living.

The apartments boast intelligent and lifestyle-savvy interiors, features

- Ducted air conditioning
- Smart lighting system
- Open balcony for indoor/outdoor living
- Fridge and washer/dryer included
- European kitchen appliances/stone bench tops
- The latest bathroom fittings and design
- Tiled flooring to the living areas/carpeted bedrooms
- North facing aspect
- Security intercom system
- Gas included with rent

Connor offers

Cardio Room –A fully equipped davlit cardio gym

🛏 1 🚿 1

Price Level 6 | DEPOSIT TAKEN

Property Type Rental

Property ID 4827

Agent Details

William Chen - 0430 026 436

william@greenciff.com.au

Office Details

Greenciff Central Park Office

101/5 Carlton Street Chippendale NSW

2008 Australia

02 9199 6555

greenciff
Inner city specialists