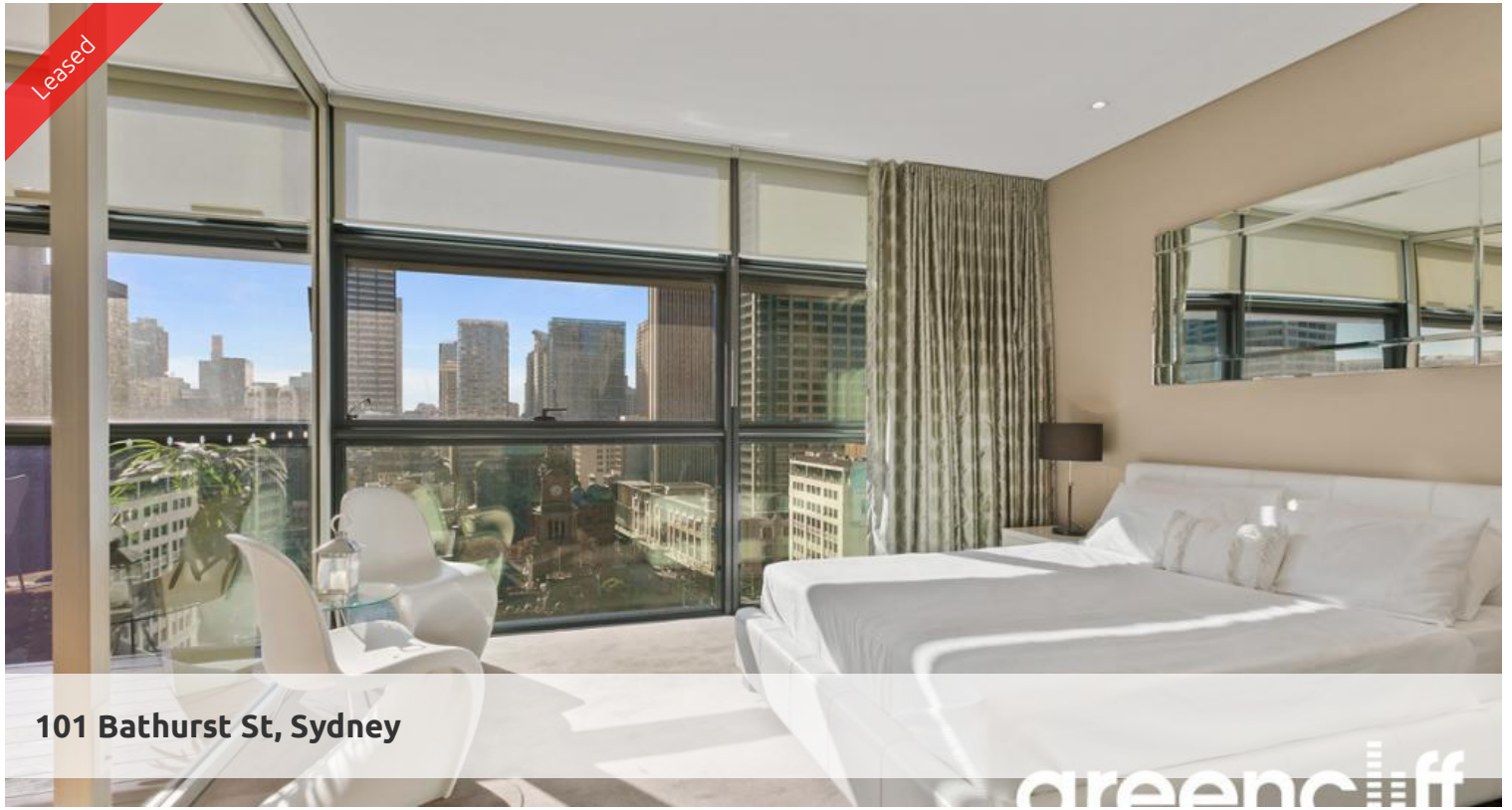


Leased



101 Bathurst St, Sydney

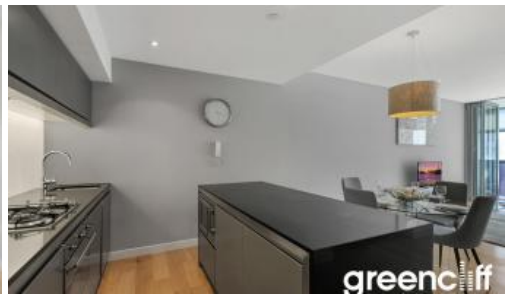
greenciff



greenciff



greenciff



greenciff

## NORTH FACING FURNISHED 2BED APARTMENT

Perfect living apartment for the working executive!

Features of this wonderful apartment include:

- Furnished
- Spacious open plan kitchen/lounge room
- Modern kitchen with gas cooking and stainless steel appliances
- 2 double sized bedrooms both with built-ins, main with ensuite
- Separate study area/extra internal storage space
- Ducted air conditioning throughout
- Secure parking space
- Timber decking loggia overlooking Town Hall and the QVB
- Full access to Club Lumiere and building facilities

Facilities include access to spectacular indoor/outdoor 50 & 20 metre pool, sauna, spa, gym, function room & 2 cinemas, 24hrs concierge and security.

The above information provided has been furnished to us by the vendor/s. We have not verified whether or not that information is accurate and do not have any belief in one way or the other in its accuracy. We do not accept any responsibility to any person for its accuracy and do no more than pass it on. All interested parties should make and rely upon their own inquiries in order to determine whether or not this information is in fact accurate.

🛏 2 🚶 2 🚗 1

**Price** Level 25 | \$1100 PW -  
DEPOSIT TAKEN

**Property Type** Rental

**Property ID** 4825

### Agent Details

Lieu Mai - 0415 797 525  
lieu@greenciff.com.au

### Office Details

Greenciff Sydney Kent St  
Level 10/488 Kent Street Sydney NSW  
2000 Australia  
02 8823 8818

**greenciff**  
Inner city specialists