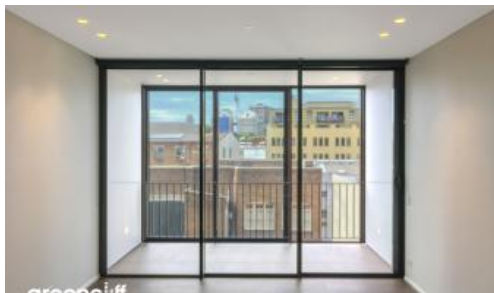
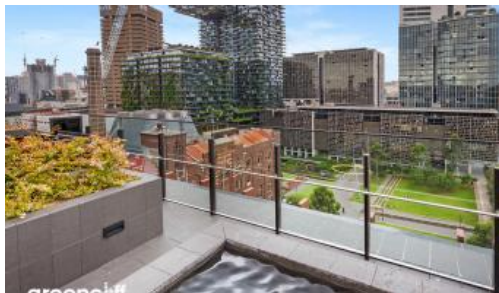


Leased

8 Central Park Ave, Chippendale



IMMACULATE 1 BEDROOM AT CONNOR, PRICE REDUCED, HURRY DONT MISS OUT!

Please meet at our office shop 1/5 Carlton Street Chippendale - 5 minutes before open time to register.

“Connor is a balance of location and surroundings, opportunity and innovation. Both modern and warm, contemporary and inviting, It is supremely comfortable nestled on the edge of old and new.”

Designed by Smart Design Studio, Connor offers a selection of 178 impeccably designed apartments.

Nestled in the heart of Chippendale, Connor is amongst fashionable retail outlets, a Woolworths supermarket and various cafes and eateries including the impressive new eating precinct Spice Alley on Kensington Lane.

Moments to Central station, buses and surrounding Universities makes living at Central Park the ultimate in downtown living.

The apartments boast intelligent and lifestyle-savvy interiors, features

- Ducted air conditioning
- Smart lighting system
- Open balcony with north facing aspect
- Fridge and washer/dryer included
- European kitchen appliances/stone bench tops
- The latest bathroom fittings and design
- Timber flooring to the living areas/carpeted bedroom
- Security intercom system
- Gas included with rent

🛏 1 🚿 1

Price L5/8 Central Park Ave | \$550
PW 1Bed+Study Nook

Property Type Rental

Property ID 4690

Agent Details

William Chen - 0430 026 436
william@greenciff.com.au

Office Details

Greenciff Central Park Office
101/5 Carlton Street Chippendale NSW
2008 Australia
02 9199 6555

greenciff
Inner city specialists