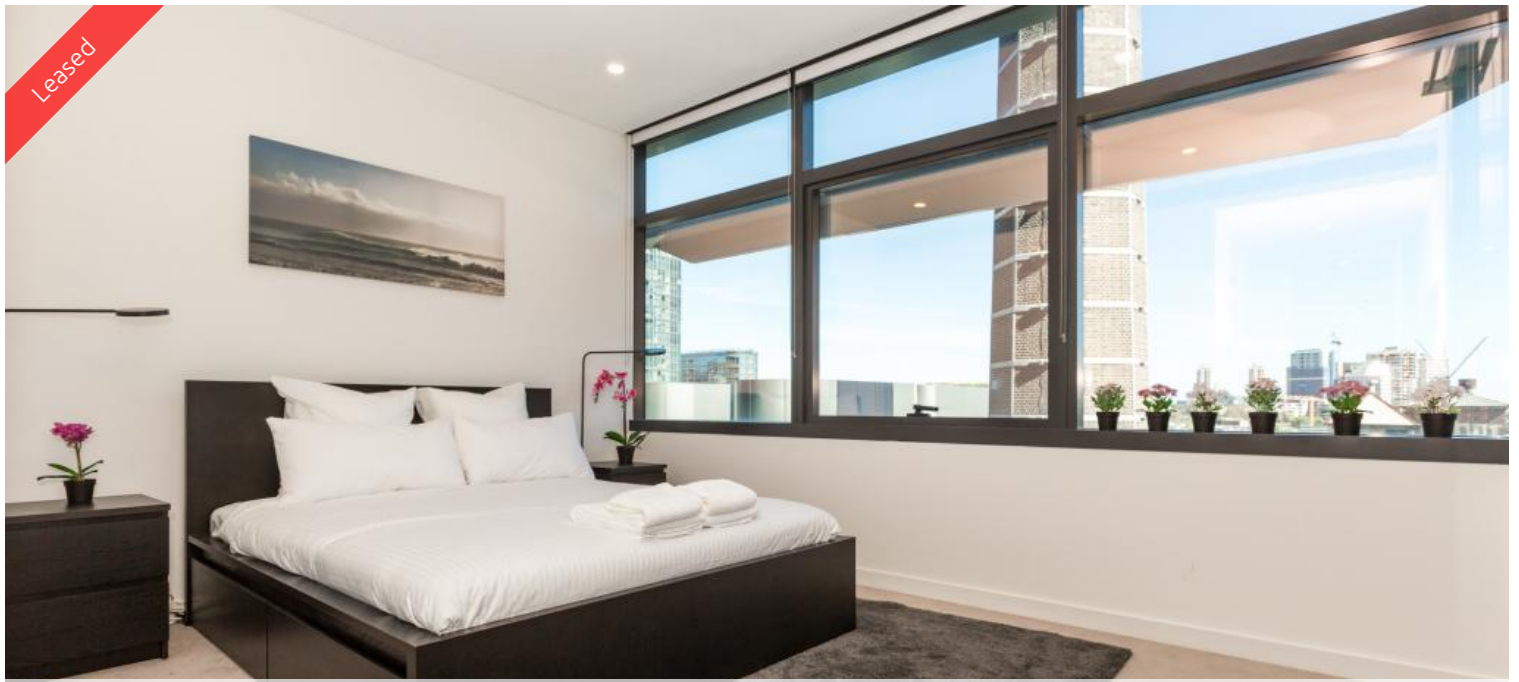


Leased



1 Chippendale Way, Chippendale



Dual Key Immaculate Furnished Studio - Water, gas, electricity and internet included in the rent.

For Open Inspection please come few minutes early to register at our Chippendale Office 101/5 Carlton Street Chippendale NSW 2008

DUO is designed by one of the most esteemed architecture practices in the world, Foster + Partners. Located on Broadway, DUO is positioned at the North West aspect of the Central Park master-plan.

DUO presents a luxurious lifestyle and premium amenities including an expansive lobby area to meet and greet, mixed-use recreation room, resort-style indoor/outdoor swimming pool, gym, Jacuzzi located on level 2, lounge, dining room and a rooftop area complete with BBQ facilities, entertainment terraces, flexible seating and beautifully landscaped spaces located on level 16.

Features include:

- Modern Kitchen with Stone benches fridge & dishwasher included
- Wooden floors/ carpeted bedroom
- Ducted air conditioning
- Internal laundry with washing machine and dryer
- Built-in wardrobe
- Balcony/deck
- Indoor gym, swimming pool, and spa

For further information or to inspect, please call Renee Sun on 0405 822 430 or 9199 6555.

** images used maybe indicatives only**

🛏 2 🚿 2

Price Level 9 | \$1000PW Furnished
Include Bills
Property Type Rental
Property ID 4676

Agent Details

William Chen - 0430 026 436
william@greycliff.com.au

Office Details

Greycliff Central Park Office
101/5 Carlton Street Chippendale NSW
2008 Australia
02 9199 6555

greenciff
Inner city specialists