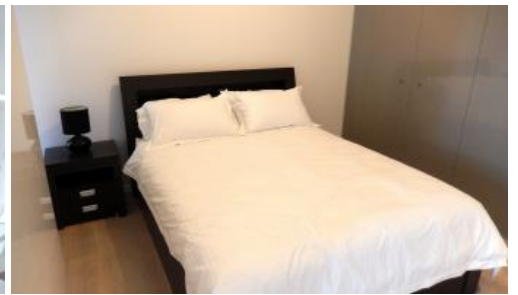
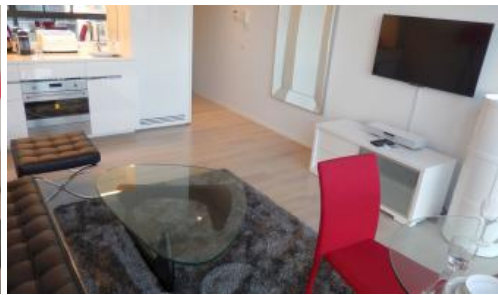
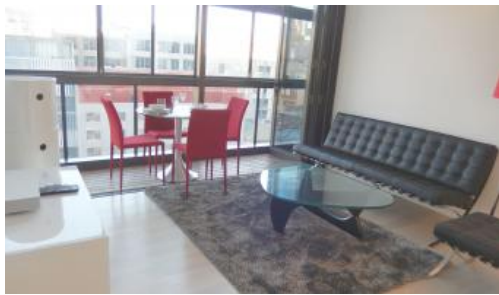




802, 8 Park Lane, Chippendale



WELL FURNISHED ONE BEDROOM SUITE APARTMENT

Greencliff - Official On-Site Rental Management Team for Central Park!

One Central Park is inner city living at its best!

Enjoy the convenience of shopping, entertainment, dining and transport right at your doorstep. Built around a beautiful park, One Central Park is the perfect combination of luxury meeting nature.

Rich in amenities, this Central Park development features:

- Luxury apartments with stainless steel appliances
- Security building with 24 hour concierge
- Fitness centre with pool, gymnasium & spa
- Bonus of a rooftop BBQ area & spa
- 6 star green rated development
- 5 level shopping centre with Woolworths
- East facing aspect

For further information or to inspect, please call Renee Sun on 0405 822 430 or 9199 6555.

** images used maybe indicatives only**

The above information provided has been furnished to us by the vendor/s. We have not verified whether or not that information is accurate and do not have any belief in one way or the other in its accuracy. We do not accept any responsibility to any person for its accuracy and do no more than pass it on. All interested parties should make and rely upon their own inquiries in order to determine whether or not this information is in fact accurate.

 1  1

Price Level 8 | DEPOSIT TAKEN

Property Type Rental

Property ID 4629

Agent Details

William Chen - 0430 026 436

william@greencliff.com.au

Vicki Zhao - 0478 901 594

vicki@greencliff.com.au

Office Details

Greencliff Central Park Office

101/5 Carlton Street Chippendale NSW

2008 Australia

02 9199 6555

greenc  **ff**
Inner city specialists