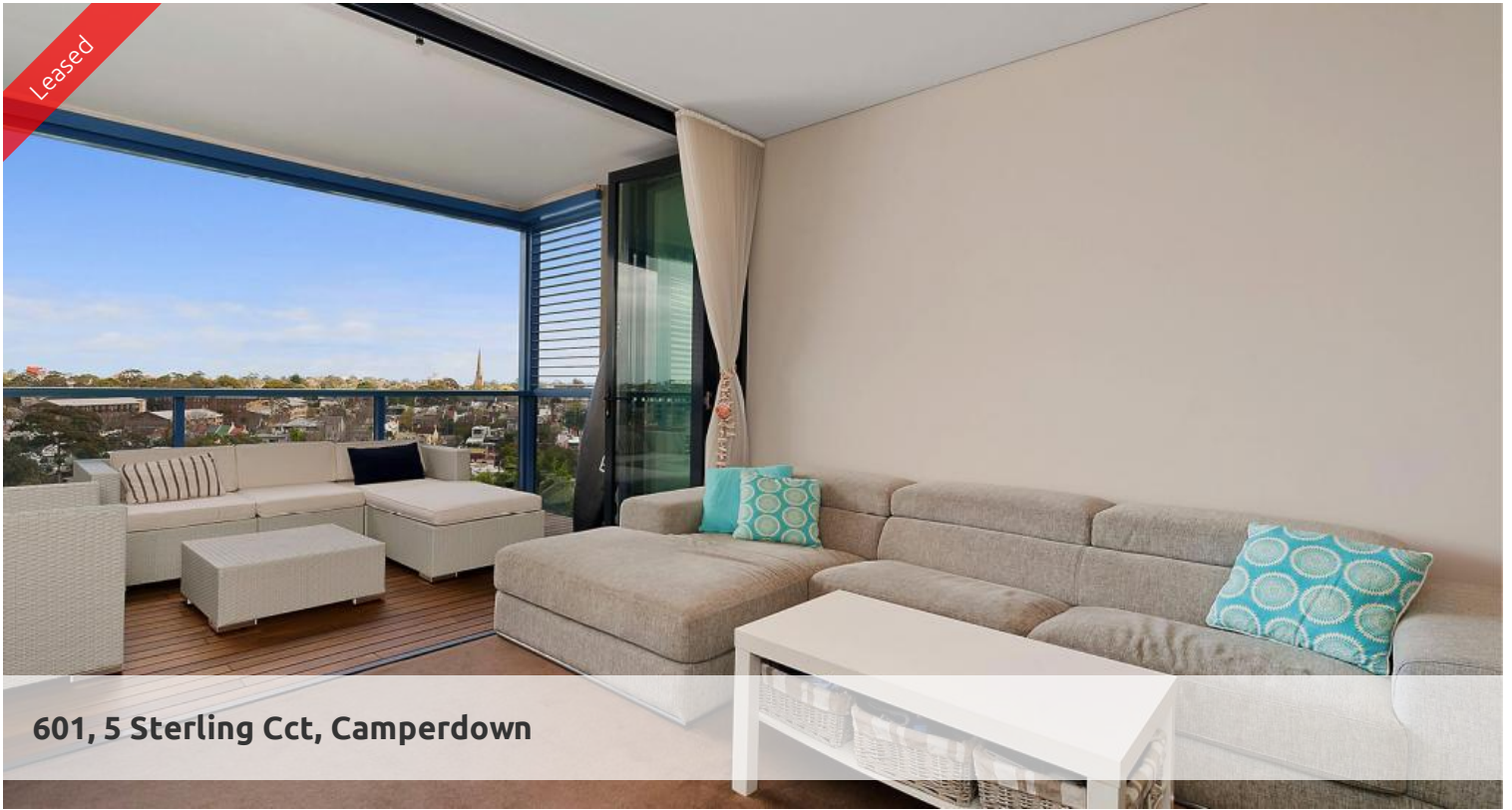


Leased



601, 5 Sterling Cct, Camperdown



'TRIO' ONE BEDROOM APARTMENT + PARKING!

Sunny and spacious West facing one bedroom apartment located on the 6th floor of the North building of sought after "Trio". Features include:

- Open plan gas kitchen with Smeg stainless steel appliances
- Spacious living area superbly flowing to generous loggia
- Internal laundry facilities
- Sleek bathroom with separate bath and shower
- Spacious bedroom with built-in robes and lovely outlook
- Superb finishes throughout, reverse cycle air conditioning
- Natural flow of indoor/outdoor living, ideal for alfresco entertaining
- Generous loggia
- Security building with car space

Being in The City Quarter Complex you will be able to enjoy the free, unlimited access to your choice of a 50m outdoor or 25m indoor pool and two gymnasiums. The complex also has 24hr security, a Japanese restaurant and cafe.

Use of pool and gym subject to COVID19 restrictions

Only a 10 minute bus ride to the city or an easy stroll to Glebe, Broadway, Leichhardt and Newtown which are just around the corner.

**images used may be indicatives only.

🛏 1 🚿 1

Price	DEPOSIT TAKEN
Property Type	Rental
Property ID	4623

Agent Details

Tammy (Rungnapa) Kanittanon - 0431 511 907 tammy@greenciff.com.au
Michelle Kilala - 0419 777 239 michelle@greenciff.com.au

Office Details

Greenciff Camperdown Office
Shop 1 1 Sterling Cct Camperdown NSW
2050 Australia
02 8262 8262

greenciff
Inner city specialists