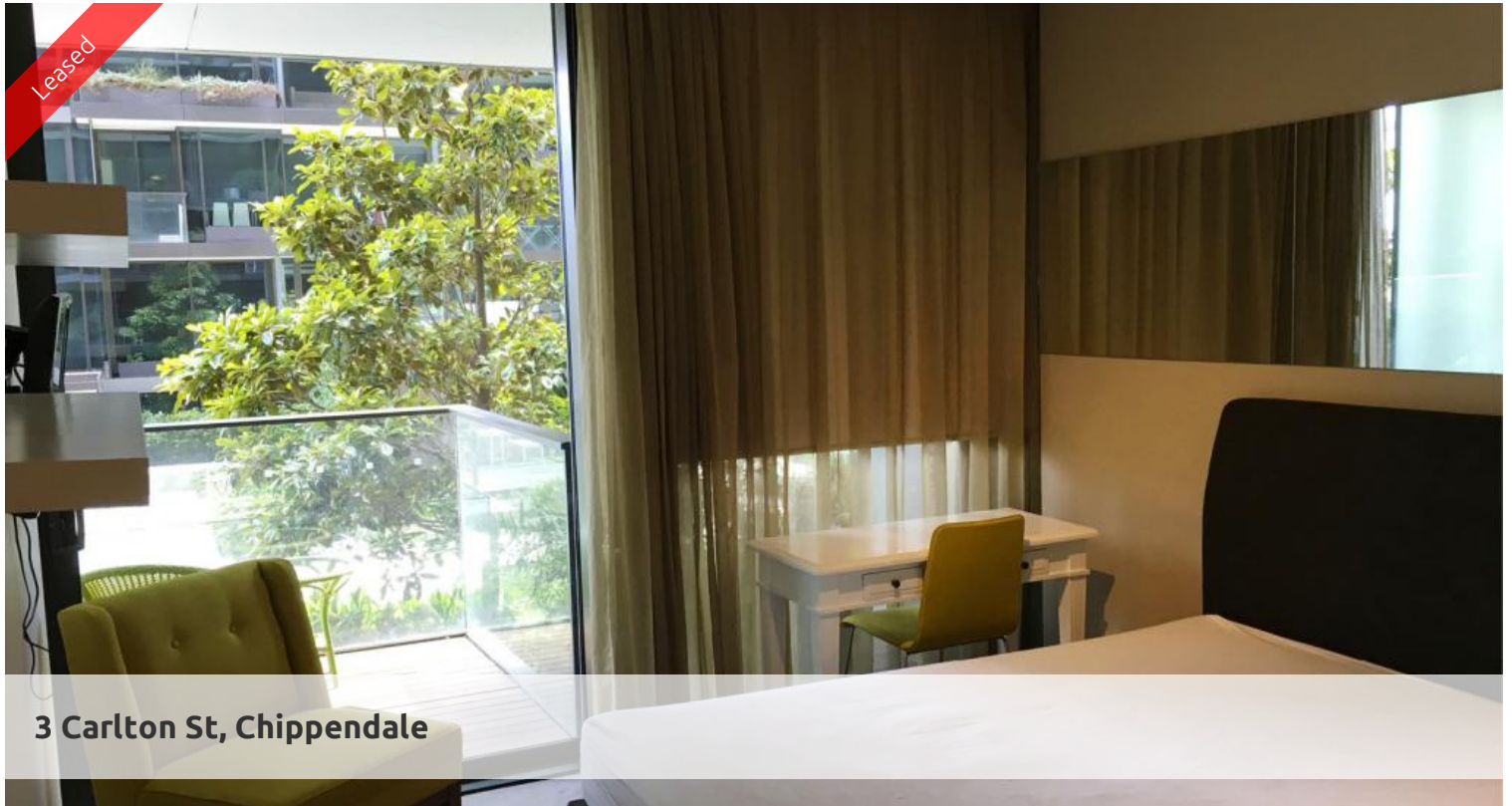


Leased



3 Carlton St, Chippendale



STUDIO APARTMENT IN ONE CENTRAL PARK

For Open Inspection please come few minutes early to register at our Chippendale Office 101/5 Carlton Street Chippendale NSW 2008

One Central Park is inner city living at its best!

Enjoy the convenience of shopping, entertainment, dining and transport right at your doorstep. Built around a beautiful park and draped in a living vertical garden, One Central Park is the perfect combination of luxury meeting nature.

Rich in amenities, this Central Park features:

- Electricity, Gas and water bills inclusive
- Carpet flooring
- Security building with 24 hour concierge
- Fitness centre with pool, gymnasium & spa
- 6 star green rated development
- 5 level shopping centre with Woolworths
- Pool and garden views from apartment
- Fridge and washer/dryer included
- More than 30,000sqm of surrounding park and public space.

For further information or to inspect, please call Renee sun 0404 822 430 or 9199 6555.

** images used maybe indicatives only**

The above information provided has been furnished to us by the vendor/s. We have not verified whether or not that information is accurate and do not have any belief in one way or the other in its accuracy. We do not accept any responsibility to any person for its accuracy and do no more than pass it on. All interested parties should make and rely upon their own inquiries in order to determine whether or not this information is in fact accurate.

🛏 1 🚿 1

Price Lv 6 | \$550 PW FURNISH Inclu water, gas & elec

Property Type Rental

Property ID 4570

Agent Details

William Chen - 0430 026 436
william@greenciff.com.au

Office Details

Greenciff Central Park Office
101/5 Carlton Street Chippendale NSW
2008 Australia
02 9199 6555

greenciff
Inner city specialists