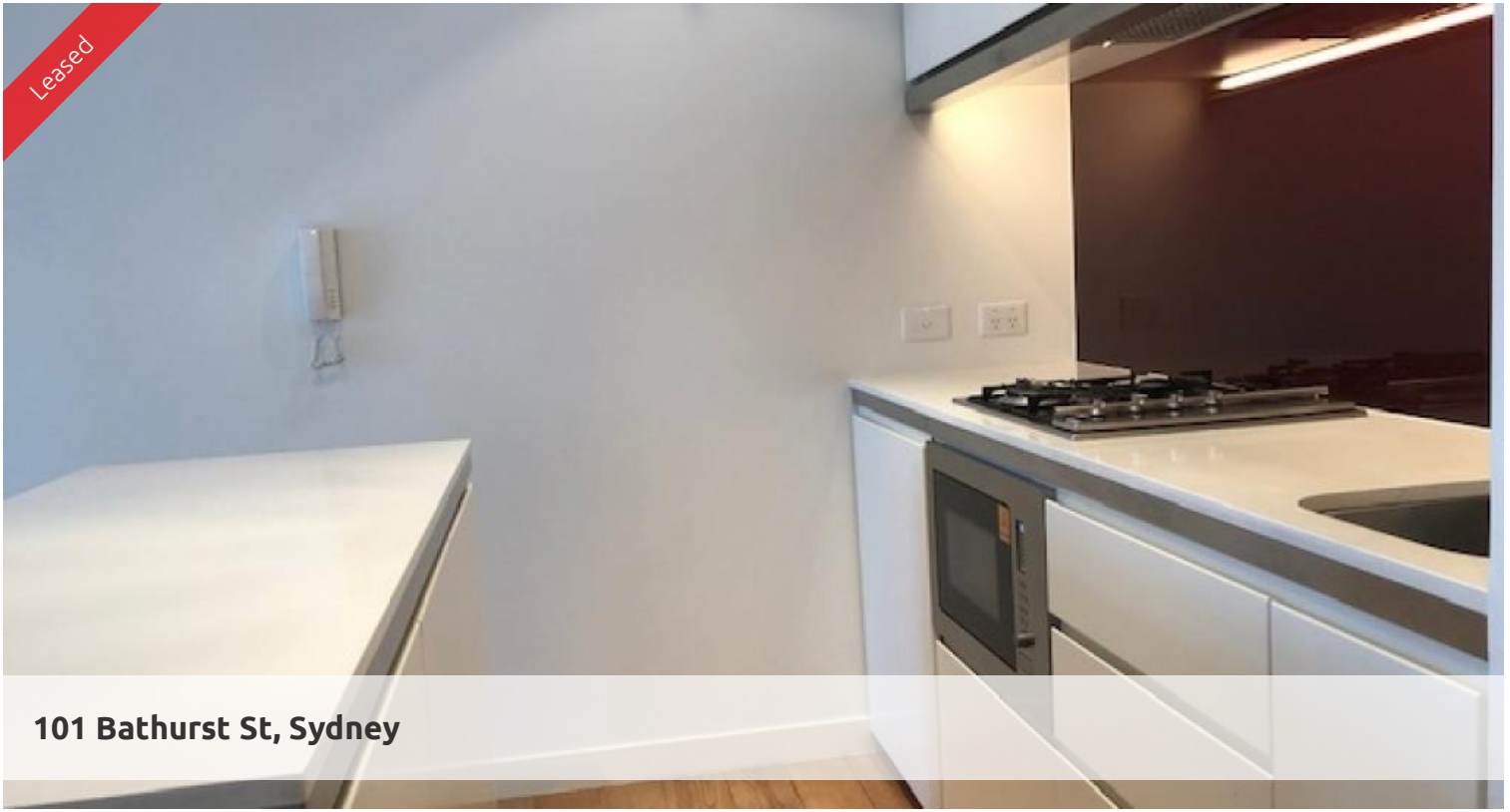


Leased



101 Bathurst St, Sydney



## EAST FACING DELIGHT

Please meet in the lobby 5mins before scheduled open time to register for inspection.

Extraordinary Lumiere Residences, Sydney's mid-town becomes a vibrant living quarter through creation of Regent Place, Australia's first vertical village. The 56- level residential tower with 456 light-filled homes is an extraordinary re-invention of high-rise living.

This apartment features:-

- Spacious combined lounge and dining area
- Open plan kitchen with European gas cooking, Stone benchtop and drawer dishwasher
- Double sized bedroom with built-in wardrobes
- Floor to ceiling windows
- Internal laundry with dryer
- Generous study area/loggia
- Secure parking space

The Lumiere Residences features 2 levels of private residential facilities including a 50 metre swimming pool spanning indoor to outdoor, a comprehensive first class gym, yoga/games room, 2 cinemas, meeting area and 24 hour concierge/security. Living in Lumiere is all about giving residents the distinct advantage of convenience, such as finding something to do as close as "downstairs" in Regent's Place own restaurants, or the city's cinema precinct.

\* No pets

\* Minimum 6 to 12 months lease

\* Photographs used may be indicative.

 1  1  1

**Price** Level 25 | \$830 PW  
**Property Type** Rental  
**Property ID** 4514

### Agent Details

Lieu Mai - 0415 797 525  
lieu@greenciff.com.au

### Office Details

Greenciff Sydney Kent St  
Level 10/488 Kent Street Sydney NSW  
2000 Australia  
02 8823 8818

**greenciff**  
Inner city specialists