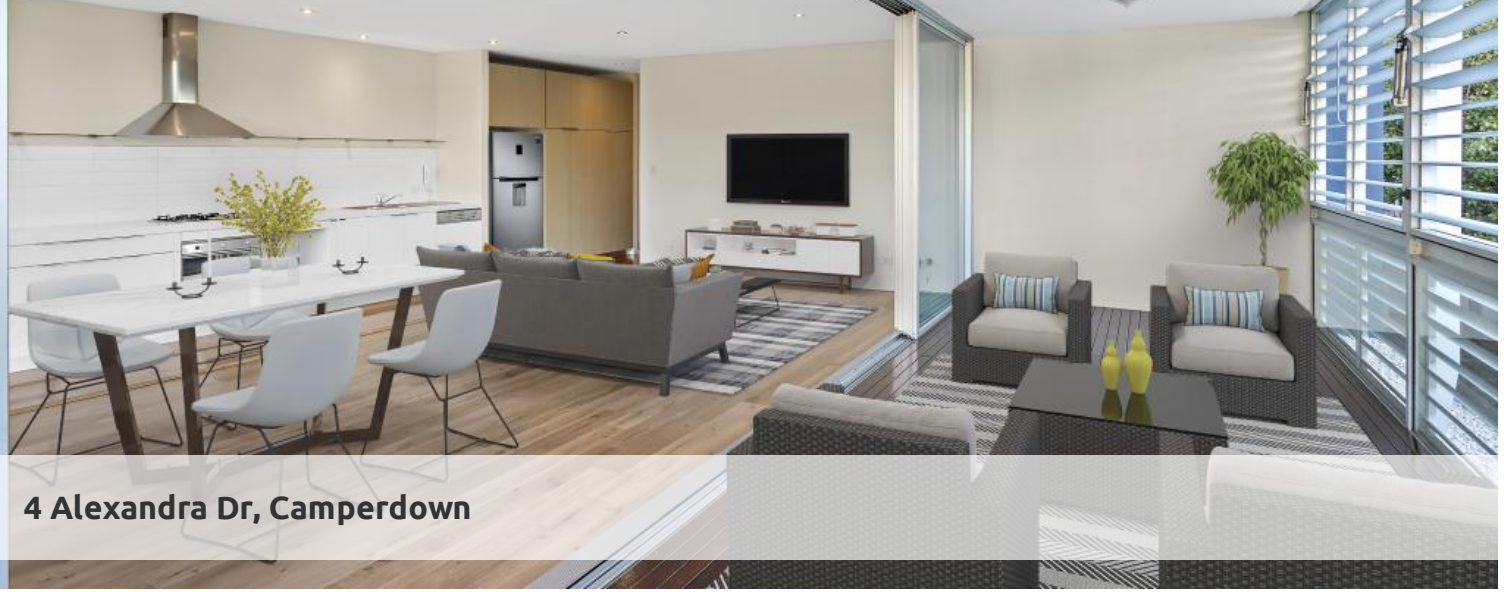
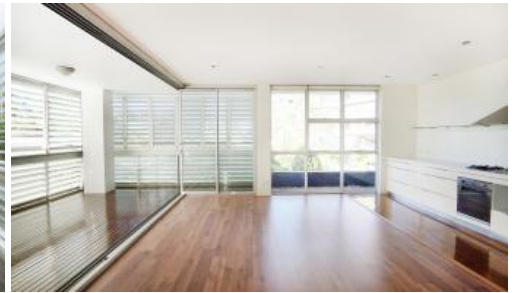


Leased



4 Alexandra Dr, Camperdown



### "AQUILON" NORTH FACING TWO BEDROOM APARTMENT!

Perfectly positioned within sought after "Aquilon" is this lovely north facing two bedroom apartment. Features include:

- Ultra modern open plan kitchen, spacious living area
- Spacious timber decked loggia, ideal for alfresco dining
- Generous bedrooms, both with built-in wardrobes
- Two sleek bathrooms, en-suite off master bedroom
- Light and airy throughout, internal laundry facilities
- Security building with lift and security car space
- Recently painted throughout, neutral palette not as per photos

Set in the popular City Quarter complex, boasting access to your choice of 50 metre outdoor or 25m indoor pool and two gymnasiums.

The complex also has 24 hour security, Japanese restaurant, cafés and a convenience store. All within ten minutes from Glebe, Broadway, Leichhardt, Sydney University and the CBD.

For further enquiries or to book a private inspection, please call Ugo Awujo on 0469 652 801

The above information provided has been furnished to us by the vendor/s. We have not verified whether or not that information is accurate and do not have any belief in one way or the other in its accuracy. We do not accept any responsibility to any person for its accuracy and do no more than pass it on. All interested parties should make and rely upon their own inquiries in order to determine whether or not this information is in fact accurate.

🛏 2 📶 2 🚗 1

**Price**  
**Property Type**  
**Property ID**

DEPOSIT MADE  
Rental  
4479

#### Agent Details

Tammy (Rungnapa) Kanittanon - 0431 511 907 tammy@greencliff.com.au  
Michelle Kilala - 0419 777 239 michelle@greencliff.com.au

#### Office Details

Greencliff Camperdown Office  
Shop 1 1 Sterling Cct Camperdown NSW  
2050 Australia  
02 8262 8262

**greenc**  **ff**  
Inner city specialists