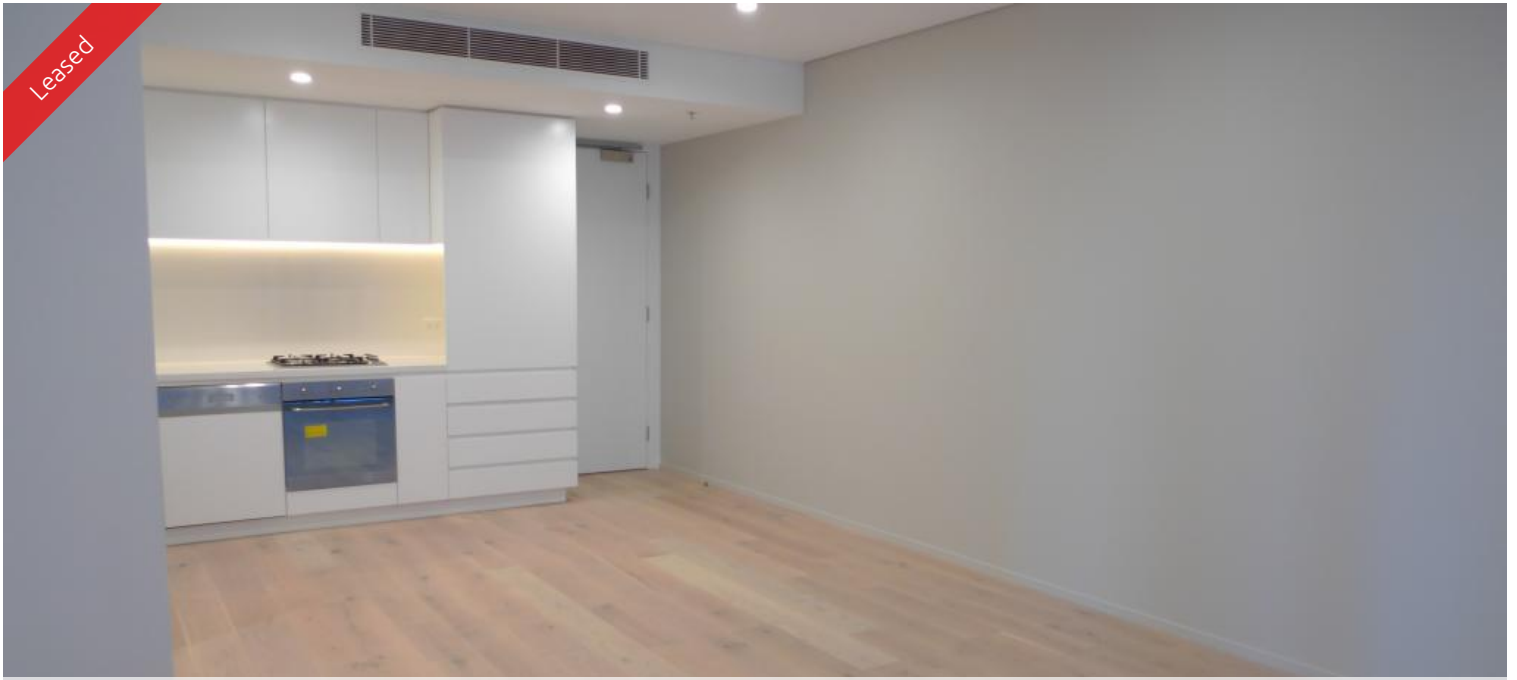


Leased



23-25 Pelican St, Surry Hills



Unfurnished One Bedroom with large entertainers balcony

Move to The Pelican and place yourself at the centre of Sydney's most vibrant city village.

- Floor to ceiling glass windows
- Open plan living and dining area
- Modern kitchen featuring gas cooking, dishwasher
- Chic bathrooms
- Double sized bedroom with built in cupboards
- Internal laundries are cleverly concealed and smart storage is designed for practicality

Pelican is just 200 metres from Hyde Park and a delightful 20 minute stroll from Sydney Harbour, or a brisk walk or quick pedal to Sydney's big open green space at Centennial Park

Shops, restaurants at door.

The above information provided has been furnished to us by the vendor/s. We have not verified whether or not that information is accurate and do not have any belief in one way or the other in its accuracy. We do not accept any responsibility to any person for its accuracy and do no more than pass it on. All interested parties should make and rely upon their own inquiries in order to determine whether or not this information is in fact accurate.

 1  1

Price Centrally located | \$650
PW

Property Type Rental

Property ID 4441

Agent Details

Lieu Mai - 0415 797 525
lieu@greenciff.com.au

Office Details

Greenciff Sydney Kent St
Level 10/488 Kent Street Sydney NSW
2000 Australia
02 8823 8818

greenciff
Inner city specialists