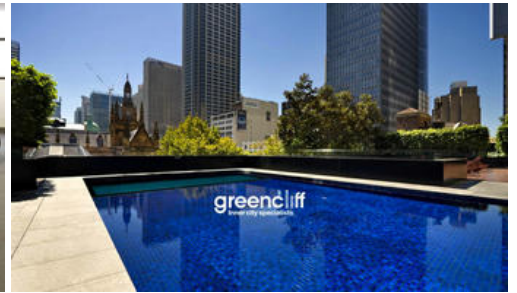
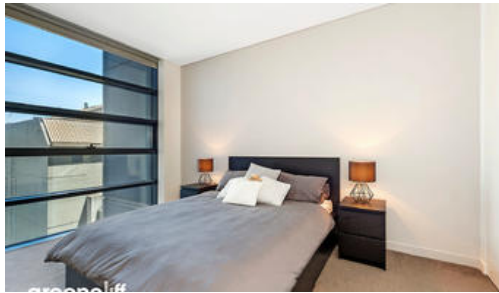


Leased



Sydney



Lumiere Residences

West facing unfurnished one bedroom apartment available on level 32 in the sought after Lumiere building.

The apartment features

- Roughly 65sqm of living space
- Generous size built in robe
- Modern kitchen & bathroom facilities
- Internal laundry with washer & dryer
- Ducted air conditioning
- Generous storage space
- Study nook at entrance
- Full access to Club Lumiere and building facilities

- Timber floors/carpet to bedroom

Facilities include access to spectacular indoor/outdoor 50 & 20 metre pool, sauna, spa, gym, function room & 2 cinemas.

* No pets

* Minimum 6 to 12 months lease

* Photographs used may be indicative.

The above information provided has been furnished to us by the vendor/s. We have not verified whether or not that information is accurate and do not have any belief in one way or the other in its accuracy. We do not accept any responsibility to any person for its accuracy and do no more than pass it on. All interested parties should make and rely upon their own inquiries in order to determine whether or not this information is in fact accurate.

🛏 1 🚿 1

Price

DEPOSIT TAKEN | \$750
PW

**Property
Type**

rental

Property ID

4430

Agent Details

Lieu Mai - 0415 797 525
lieu@greenciff.com.au

Office Details

Greenciff Sydney Kent St
Level 10/488 Kent Street Sydney NSW
2000 Australia
02 8823 8818

greenciff
Inner city specialists