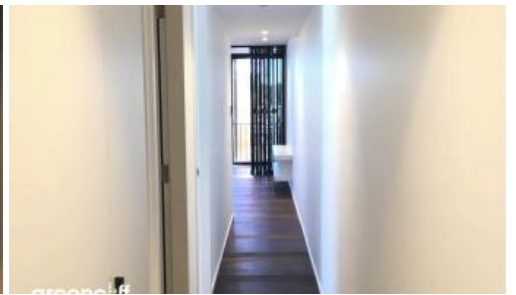
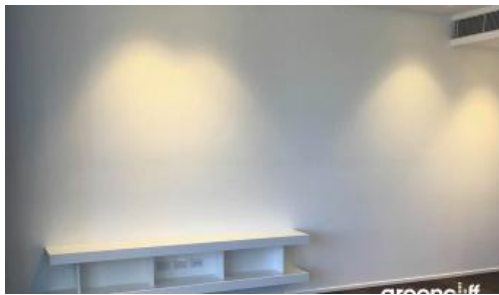




8 Central Park Ave, Chippendale



LARGE OPEN PLAN 1 BED PLUS STUDY

Please meet at our office 101/5 Carlton Street, Chippendale a few minutes before to register and inspect.

"Connor is a balance of location and surroundings, opportunity and innovation. Both modern and warm, contemporary and inviting, It is supremely comfortable nestled on the edge of old and new."

Designed by Smart Design Studio, Connor offers a selection of 178 impeccably designed apartments.

Nestled in the heart of Chippendale, Connor is amongst fashionable retail outlets, a Woolworths supermarket and various cafes and eateries including the impressive new eating precinct Spice Alley on Kensington Lane.

Moments to Central station, buses and surrounding Universities makes living at Central Park the ultimate in downtown living.

The apartments boast intelligent and lifestyle-savvy interiors, features

- Ducted air conditioning
- Large open plan living room
- Double glazed glass
- Smart lighting system
- Loggia for indoor/outdoor living
- Fridge and washer/dryer included
- European kitchen appliances/stone bench tops
- The latest bathroom fittings and design
- Security intercom system

Connor offers

Greencliff offers a fully serviced and debt-free credit line

🛏 1 📶 1 🚗 1

Price

DEPOSIT TAKEN |
\$730PW

Property Type

Rental

Property ID

4349

Agent Details

Lieu Mai - 0415 797 525
lieu@greenciff.com.au

Office Details

Greencliff Central Park Office
101/5 Carlton Street Chippendale NSW
2008 Australia
02 9199 6555

greenciff
Inner city specialists