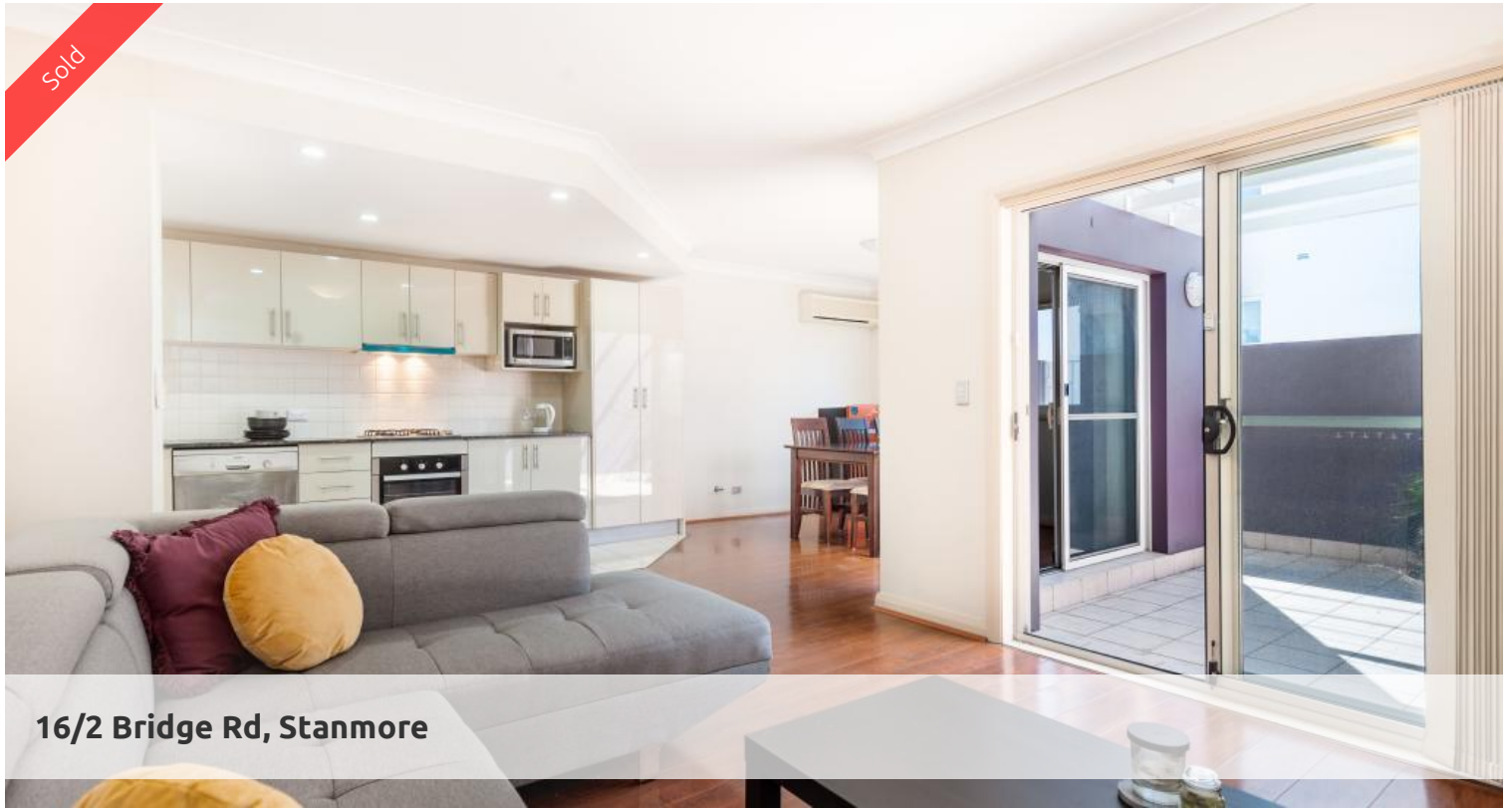


Sold



16/2 Bridge Rd, Stanmore



### North facing sun filled 3 bedroom Townhouse

Positioned perfectly in the inner West ,this solid brick 3 bedroom Townhouse combines open plan living and dining area with a well appointed kitchen. Polished timber floors through out the living area with the North facing courtyard bathed in sunlight all day long.

Situated in a boutique block with a well maintained swimming pool landscaped garden and secure intercom private entry.

Upstairs are 3 good size bedrooms all with built in robes ,the main with en suite an extra bathroom with bathtub for pure convenience.

Secure lock up car space and plenty of storage through out the property .

Situated a stroll from all the dining and entertainment options of the inner West and vibrant Newtown,Sydney University ,RPA or just a quick trip to the heart of the city .

Currently leased for \$870.00 until early February for \$870.00 per week this property will work for the astute investor or someone looking for a light filled home close to all the at Sydney has to offer.

🛏 3 🏠 2 🚗 1

**Price**

SOLD

**Property Type**

Residential

**Property ID**

4331

#### Agent Details

Emlyn Walters - 0405 606 025

[emlyn@greenciff.com.au](mailto:emlyn@greenciff.com.au)

William Chen - 0430 026 436

[william@greenciff.com.au](mailto:william@greenciff.com.au)

#### Office Details

Greenciff Camperdown Office

Shop 1 1 Sterling Cct Camperdown NSW

2050 Australia

02 8262 8262

The above information provided has been furnished to us by the vendor/s. We have not verified whether or not that information is accurate and do not have any belief in one way or the other in its accuracy. We do not accept any responsibility to any person for its accuracy and do no more than pass it on. All interested parties should make and rely upon their own inquiries in order to determine whether or not this information is in fact accurate.

**greenciff**  
Inner city specialists