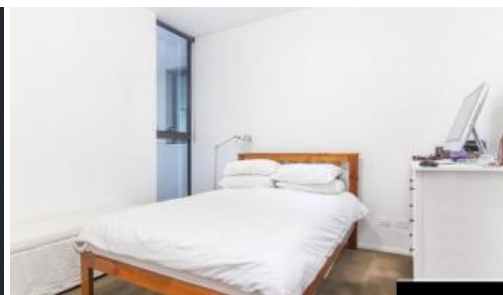
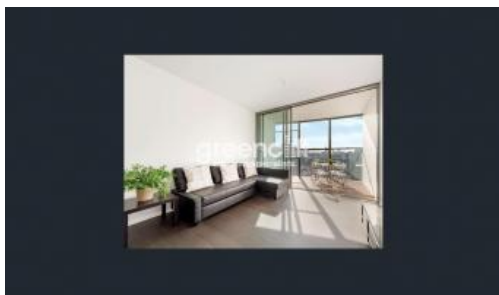


Leased



## 18 Park Lane, Chippendale



### ONE BEDROOM WITH VIEWS AND PARKING - Bills Included

This one bedroom apartment sits on level 20 with stunning district views. Finished with the highest of quality of finishes, polished floor boards, reverse cycle air conditioning and security parking. Located in the The Mark one of Central Parks finest buildings with concierge and 5 star facilities.

- \* Modern kitchen with stainless steel appliance's, integrated dishwasher and fridge.
- \* Open plan kitchen, living and dining area.
- \* Sunny loggia/balcony area perfect for entertaining or relaxing.
- \* Modern bathroom with rain shower.
- \* Security parking and storage.

PLEASE NOTE THE PHOTOS ARE OF A SIMILAR APARTMENT AND THE FURNITURE BEING OFFERED IS DIFFERENT TO THE PHOTOS.

Central Park is a beautifully presented apartment complex offering all residents a luxurious lifestyle with shopping and dining at your door.

The above information provided has been furnished to us by the vendor/s. We have not verified whether or not that information is accurate and do not have any belief in one way or the other in its accuracy. We do not accept any responsibility to any person for its accuracy and do no more than pass it on. All interested parties should make and rely upon their own inquiries in order to determine whether or not this information is in fact accurate.

🛏 1 🚶 1 🚗 1

#### Price

DEPOSIT TAKEN | \$660  
PW

#### Property Type

Rental

**Property ID** 4187

#### Agent Details

Lieu Mai - 0415 797 525  
lieu@greenciff.com.au

#### Office Details

Greenciff Sydney Kent St  
Level 10/488 Kent Street Sydney NSW  
2000 Australia  
02 8823 8818

**greenciff**  
Inner city specialists