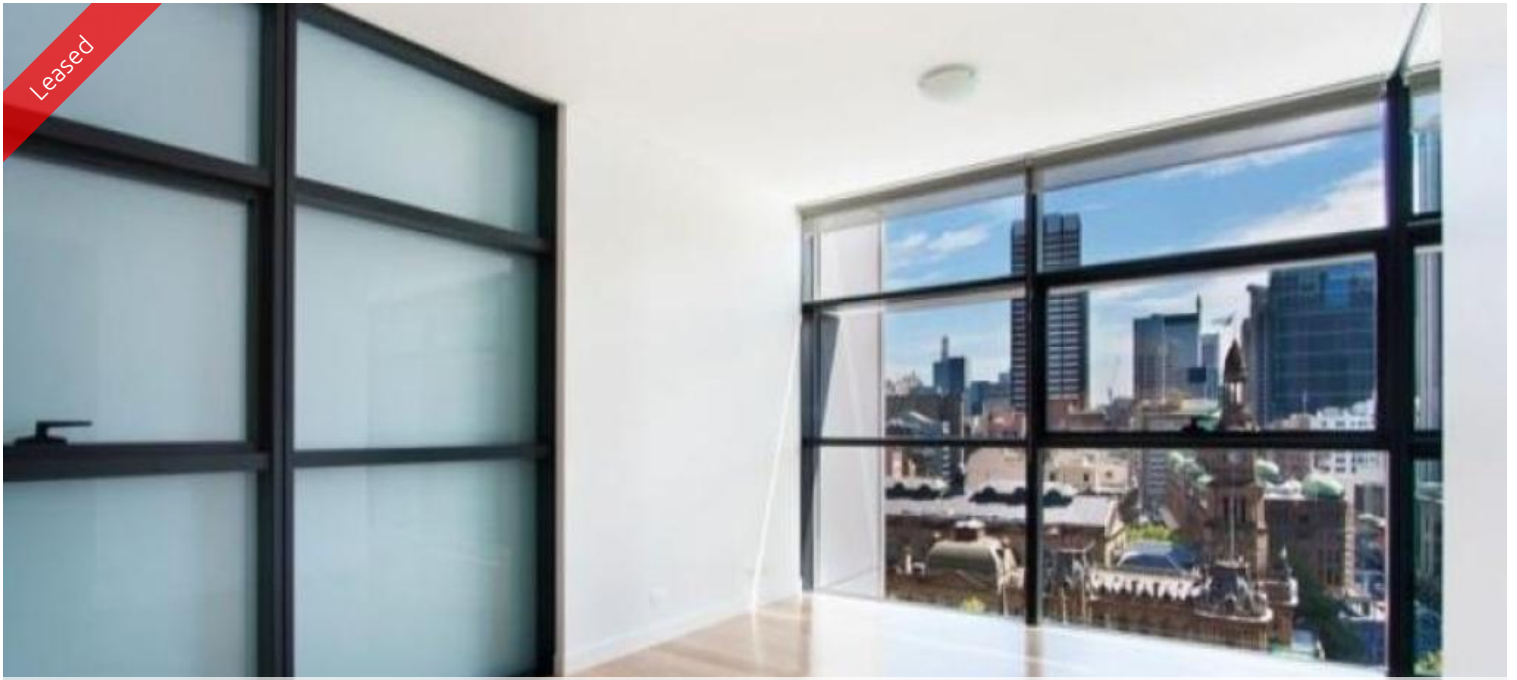


Leased



27, 101 Bathurst Street, Sydney

GREENCLIFF AGENCY®



GREENCLIFF AGENCY®



GREENCLIFF AGENCY®



GREENCLIFF AGENCY®

INSPECT: SATURDAY 19TH MARCH AT 11.30AM

"LUMIERE" GORGEOUS NORTH FACING ONE BEDROOM + PARKING

Near new unfurnished north facing rare one bedroom apartment available on level 27 of the sought after Lumiere building .

Featuring timber floors throughout, modern kitchen facilities with dishwasher, grand bathroom, floor to ceiling glass windows, internal loggia style entertaining area, internal laundry with dryer, one security undercover carspace and unlimited access to Club Lumiere. Facilities include access to spectacular indoor/outdoor 50 & 20 metre pool, sauna, spa, gym, function room & 2 cinemas.

Located in the heart of Sydney's iconic Town Hall precinct, Lumiere at Regent Place is a residential village in the sky.

(Photos may be indicative)

The above information provided has been furnished to us by the vendor/s. We have not verified whether or not that information is accurate and do not have any belief in one way or the other in its accuracy. We do not accept any responsibility to any person for its accuracy and do no more than pass it on. All interested parties should make and rely upon their own inquiries in order to determine whether or not this information is in fact accurate.

🛏 1 🚿 1 🚗 1 🏠

Price	\$730 per Week
Property Type	Rental
Property ID	407
Land Area	0 m2

Agent Details

William Chen - 0430 026 436
william@greenciff.com.au

Office Details

Greencliff Sydney Kent St
Level 10/488 Kent Street Sydney NSW
2000 Australia
02 8823 8818

greenciff
Inner city specialists