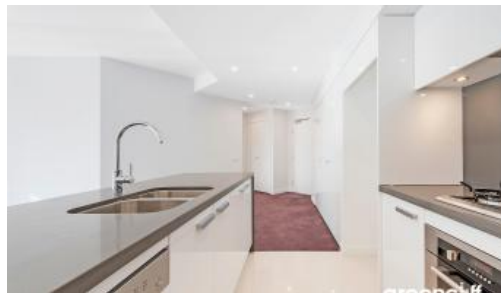


**5 Lardelli Dr, Ryde**



## LARGE NORTH WEST FACING APARTMENT IN PUTNEY HILL

Spacious one bedroom with a beautiful view of the common area garden. This property is within easy walking distance to local transport, schools, parks, shops and cafes. Other features include:

- Large well thought out combined lounge and dining area leading to large North West facing balcony
- Double sized bedroom featuring built in robes and balcony access
- Sparkling bathroom
- Well designed kitchen featuring Blanco gas cooking with built in microwave, dishwasher and ducted range hood
- Study nook
- High ceilings throughout
- Ducted air conditioning throughout
- Internal laundry with dryer
- 1 car space with storage

Building features:

- Communal garden area
- NBN and Foxtel ready
- Building manager
- Visitor parking

To arrange a private inspection or for any further information, please call Nicole Guibani on 0435 127 552.

For inspections, please buzz #102N

**\*\*Please note, images shown may be indicatives only.**

1 1 1

### Price

L1/5 Lardelli Drive | DEPOSIT TAKEN

### Property Type

Rental

### Property ID

4017

### Agent Details

William Chen - 0430 026 436

[william@greenciff.com.au](mailto:william@greenciff.com.au)

Michelle Kilala - 0419 777 239

[michelle@greenciff.com.au](mailto:michelle@greenciff.com.au)

### Office Details

Greenciff Camperdown Office

Shop 1 1 Sterling Cct Camperdown NSW

2050 Australia

02 8262 8262

**greenciff**  
Inner city specialists