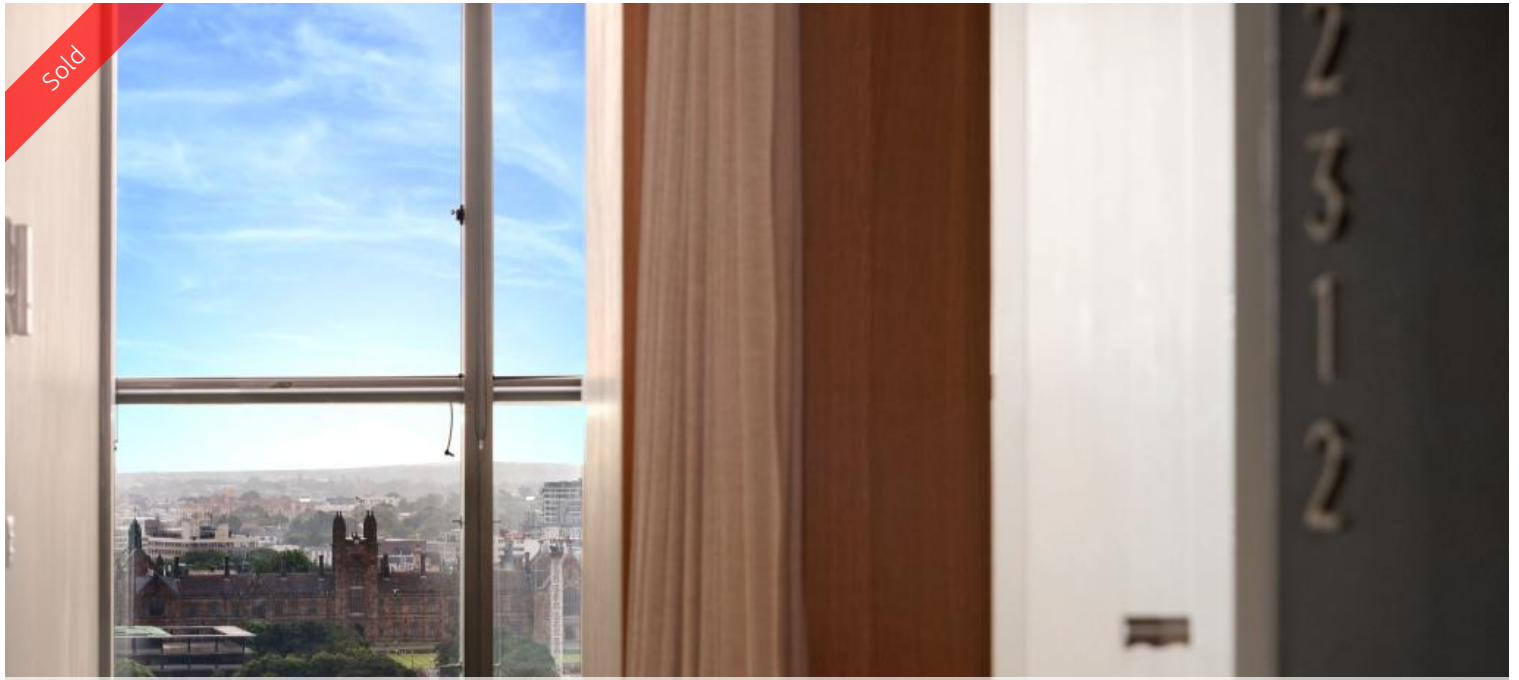


Sold



2312, 18 Park Lane, Chippendale



One Bed Suite With Extensive Park Views

Maximum Space and Privacy!

The interior benefits from a finish upgrade to marble and mirrored splash back in the bathroom and kitchen.

The space of this apartment revolves around a central pod separating the sleeping area from the living and dining space.

Features

- Concierge
- Balcony
- Double glazed windows
- Gas
- Gym
- Intercom
- Internal Laundry
- Pets allowed
- Swimming Pool

The above information provided has been furnished to us by the vendor/s. We have not verified whether or not that information is accurate and do not have any belief in one way or the other in its accuracy. We do not accept any responsibility to any person for its accuracy and do no more than pass it on. All interested parties should make and rely upon their own inquiries in order to determine whether or not this information is in fact accurate.

🛏 1 📶 1

Price SOLD for \$670,000
Property Type Residential
Property ID 3971

Agent Details

William Chen - 0430 026 436
william@greenciff.com.au

Office Details

Greenciff Sydney Kent St
Level 10/488 Kent Street Sydney NSW
2000 Australia
02 8823 8818

greenciff
Inner city specialists