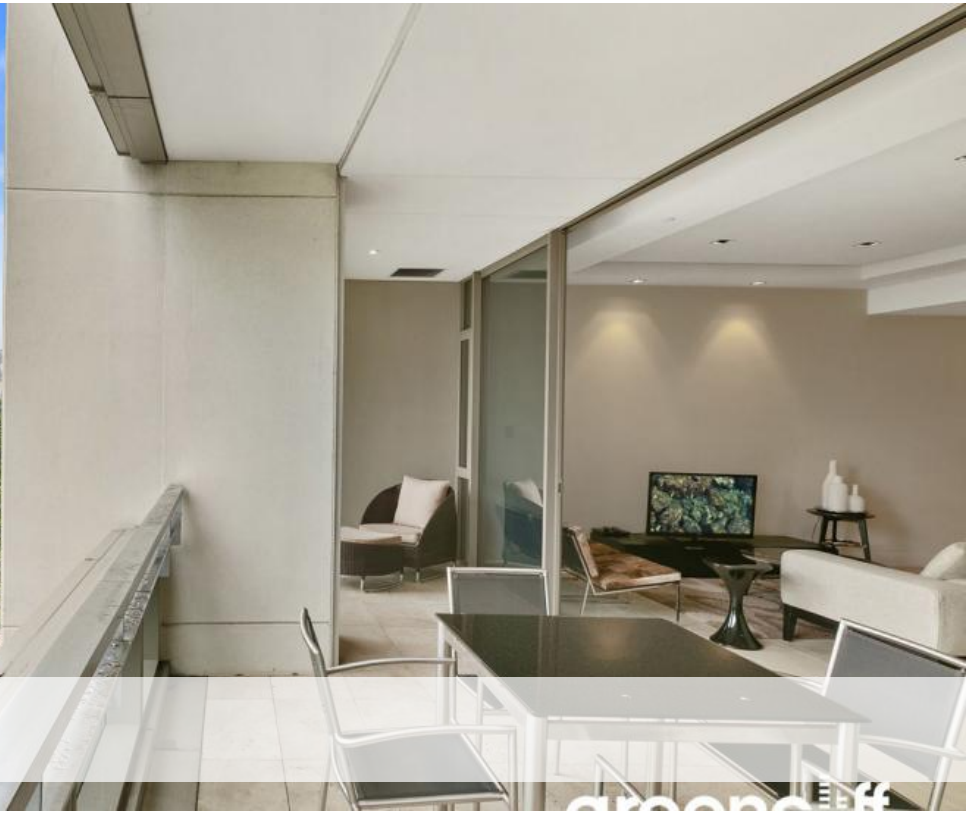


Leased



18 College St, Darlinghurst



## The Residences - Fully Furnished

The Residence Hyde Park offers exceptional front row views of Sydney's dramatic city skyline, over Hyde Park and the Royal Botanic Garden, right across to the breathtaking Sydney Harbour headlands. Uniquely positioned as the first residential address along Sydney's formal cultural and civic spine.

Accommodation - Approx 172 sqm of designer living, spacious combined entertaining area's lead through bi-fold glass doors to a covered terrace with beautiful CBD and Hyde Park vistas. Chic gas kitchen, two double bedrooms both with en-suites and extensive storage, internal laundry, secure parking for one car.

Features - From the Opera House, the main Cathedral, right through to the neighbouring Australian Museum, many of Sydney's best landmarks are within 5 minutes walking distance, as are many of Sydney's finest restaurants, theaters, parks and art galleries. Indoor pool, temperature controlled wine cellar, gymnasium, steam room, meeting rooms and communal lounge area's.

The above information provided has been furnished to us by the vendor/s. We have not verified whether or not that information is accurate and do not have any belief in one way or the other in its accuracy. We do not accept any responsibility to any person for its accuracy and do no more than pass it on. All interested parties should make and rely upon their own inquiries in order to determine whether or not this information is in fact accurate.

🛏 2 🚿 2 🚗 1

**Price** \$1700 PW Fully Furnished

**Property Type** Rental

**Property ID** 3870

### Agent Details

Lieu Mai - 0415 797 525  
lieu@greenciff.com.au

### Office Details

Greenciff Sydney Kent St  
Level 10/488 Kent Street Sydney NSW  
2000 Australia  
02 8823 8818

**greenciff**  
Inner city specialists