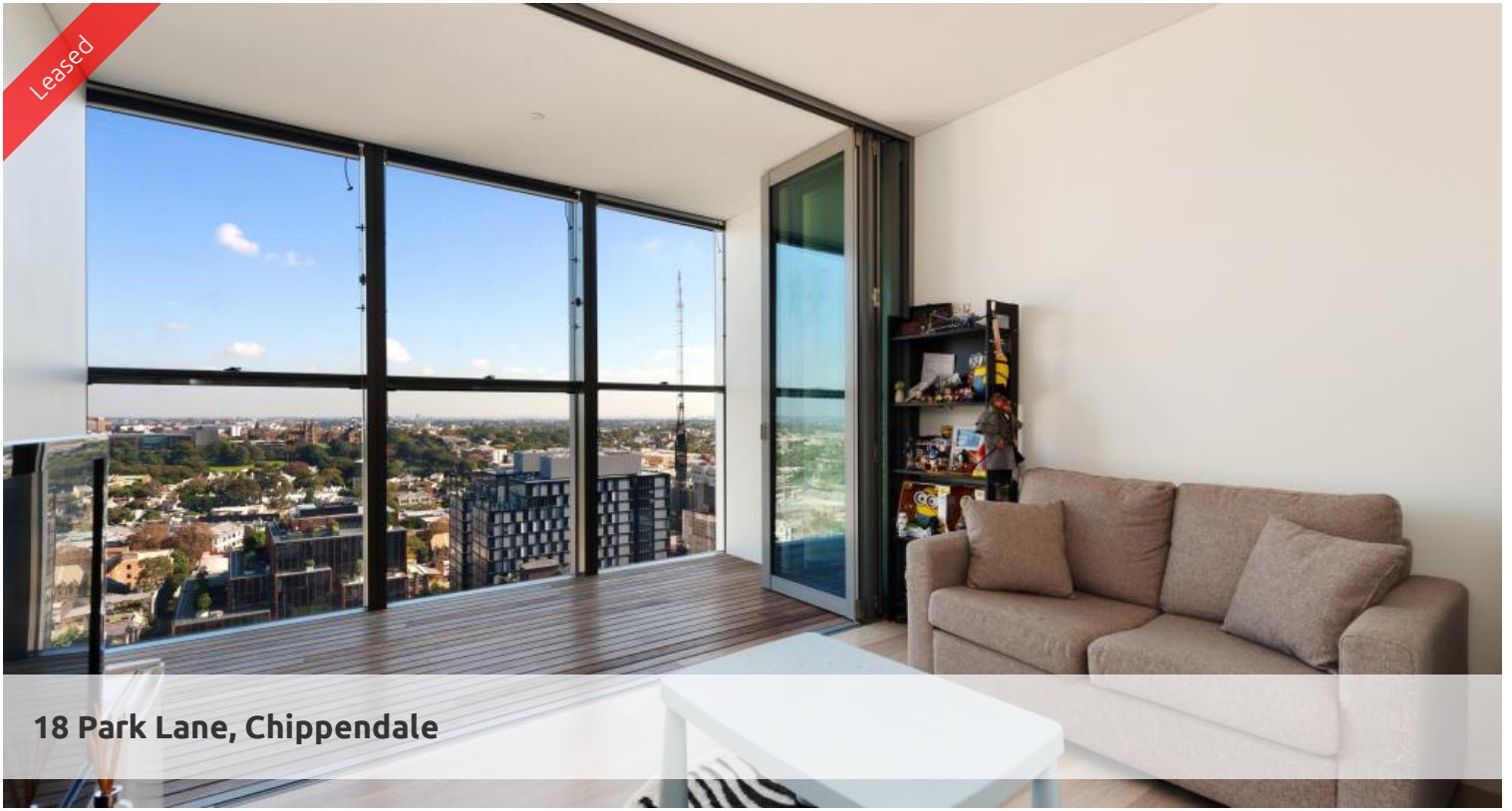


Leased



18 Park Lane, Chippendale



LARGE SUITE WITH BALCONY AND VIEWS

This well presented suite will not last long located on level 13 of the Mark building with lots of light, open and airy.

- * Open plan living and dining area with polished timber floors.
- * Designer kitchen with gas cooking, integrated fridge and dishwasher.
- * Separate bedroom with built in wardrobes.
- * Modern bathroom with rain shower.
- * Loggia/balcony that can be open or closed perfect for entertaining.
- * Internal laundry.

PLEASE NOTE SOME PHOTOS ARE NOT OF THE ACTUAL APARTMENT BUT SIMILAR.

Central Park is loved by its residents for all it has to offer. Amazing restaurants, cafes and shopping at your door all located in one of Sydney finest developments.

- * Storage cage.

The above information provided has been furnished to us by the vendor/s. We have not verified whether or not that information is accurate and do not have any belief in one way or the other in its accuracy. We do not accept any responsibility to any person for its accuracy and do no more than pass it on. All interested parties should make and rely upon their own inquiries in order to determine whether or not this information is in fact accurate.

🛏 1 🗺 1

Price

L13/18 Park Lane - \$580 p/w

Property Type

Rental

Property ID

3852

Agent Details

Vicki Zhao - 0478 901 594

vicki@greenciff.com.au

Lieu Mai - 0415 797 525

lieu@greenciff.com.au

Office Details

Greenciff Sydney Kent St

Level 10/488 Kent Street Sydney NSW

2000 Australia

02 8823 8818

greenciff
Inner city specialists