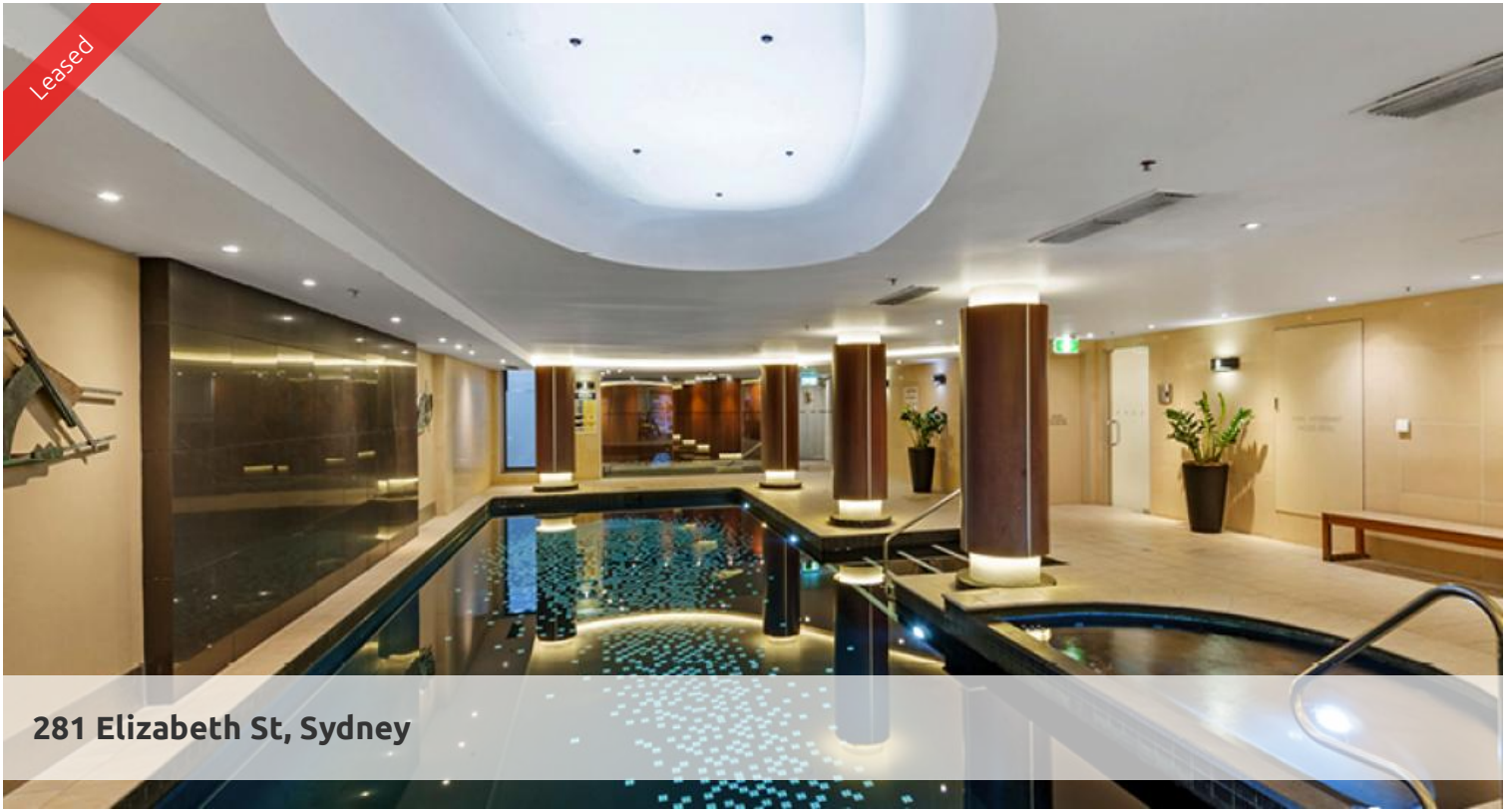
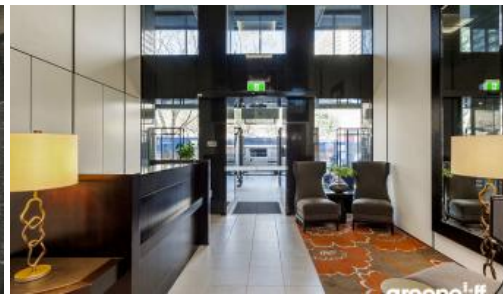


Leased



281 Elizabeth St, Sydney



Freshly Painted & New Carpet - fabulous city pad at Regency Hyde Park

Refurbished 2 bedroom apartment in The Regency Hyde Park situated on the 12th floor with a Juliette balcony overlooking the city.

Located in the heart of the city and only a five minute walk to Town Hall station or Museum station across the road, cafes and eateries at door.

Directly positioned across the road from Sydney's gorgeous Hyde Park, Regency Hyde Park has a 24hr concierge, a fully equipped gym, heated swimming pool with a spa which makes coming home such a pleasure.

- Spacious kitchen is equipped with Blanco stainless steel appliances, granite bench tops and microwave
- Combined lounge/dining which leads to a Juliette balcony
- Bright and spacious bedrooms with en-suite bathroom to master bedroom
- Separate shower and bath tub which adds a touch of elegance to the apartment.
- Internal laundry comes with a clothes dryer.
- Secured basement parking space

For more information or arrange a private viewing, please contact Renee Sun.

The above information provided has been furnished to us by the vendor/s. We have not verified whether or not that information is accurate and do not have any belief in one way or the other in its accuracy. We do not accept any responsibility to any person for its accuracy and do no more than pass it on. All interested parties should make and rely upon their own inquiries in order to determine whether or not this information is in fact accurate.

🛏 2 📶 2 🚗 1

Price Freshly Renovated Delight - \$900 PW

Property Type Rental

Property ID 3841

Agent Details

Lieu Mai - 0415 797 525
lieu@greenciff.com.au

Office Details

Greenciff Sydney Kent St
Level 10/488 Kent Street Sydney NSW
2000 Australia
02 8823 8818

greenciff
Inner city specialists