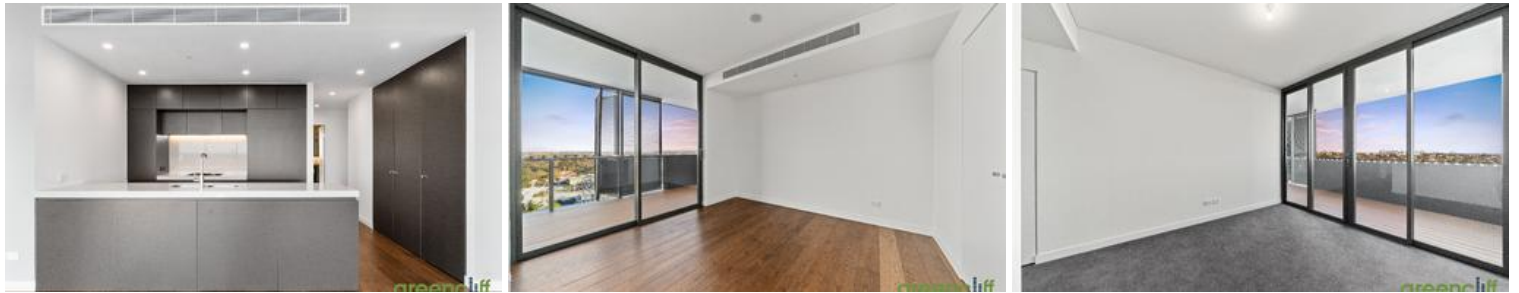




Ryde



Live an extraordinary life – Arguably the best apartment for rent currently in Ryde - DEPOSIT TAKEN - MORE PROPERTIES WANTED!

Be the first to live in this amazing apartment and have a real sense of pride every time you come home

Highlights include

- Positioned high on level 5 with a sunny North East aspect
- Uninterrupted views of the Sydney CBD, North Sydney, Chatswood and the Parramatta River
- Corner positioned featuring floor to ceiling glass
- Spacious combined lounge and dining area
- Dream kitchen, featuring SMEG gas cooking, integrated dishwasher and microwave
- Wooden floor boards to living area and second bedroom
- 2 double sized bedrooms both featuring Sydney CBD views, built in wardrobes with the main featuring an ensuite bathroom and walk in wardrobe
- Chic bathroom with separate bath and shower
- Ducted air conditioning
- NBN and Foxtel ready

The building features

- Rooftop and garden communal areas featuring BBQ and garden beds
- Common area for hosting birthday parties

The above information provided has been furnished to us by the vendor/s. We have not verified whether or not that information is accurate and do not have any belief in one way or the other in its accuracy. We do not accept any responsibility to any person for its accuracy and do no more than pass it on. All interested parties should make and rely upon their own inquiries in order to determine whether or not this information is in fact accurate.

🛏 2 🚿 2 🚗 1

Price DEPOSIT TAKEN - MORE PROPERTIES WANTED!

Property Type rental

Property ID 3791

Agent Details

Michelle Vejar - 0419 777 239
michelle@greenciff.com.au

Office Details

Greenciff Camperdown Office
Shop 1 1 Sterling Cct Camperdown NSW
2050 Australia
02 8262 8262

