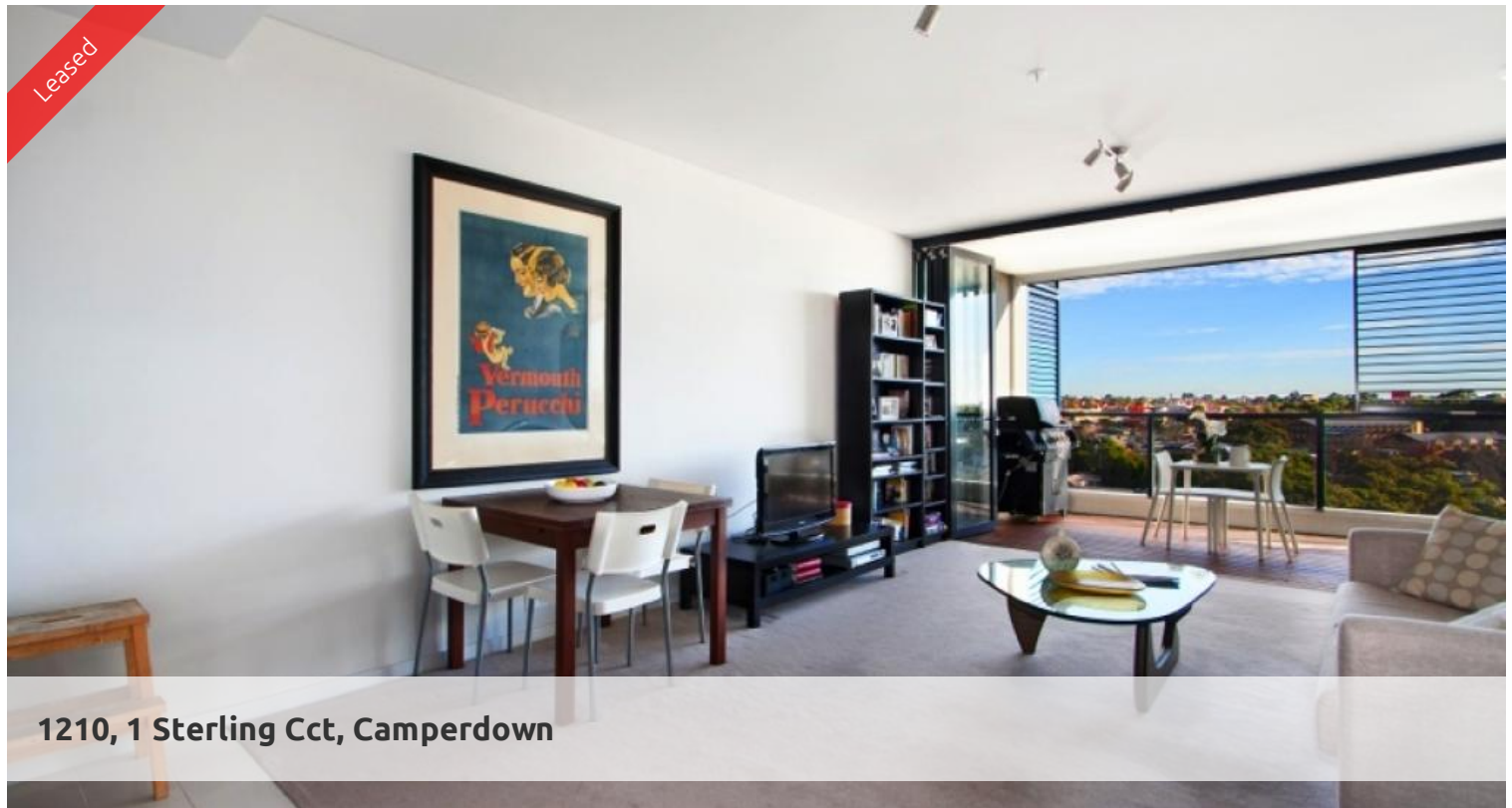


Leased



1210, 1 Sterling Cct, Camperdown



AMAZING APARTMENT WITH DISTRICT VIEWS

Trio

Greenclyff - Official On-Site Rental Management Team

Occupying an elevated site on the corner of Booth Street and Pyrmont Bridge Road, Camperdown, Trio is a bold and brilliant addition to the landscape.

Trio combines the cosmopolitan culture and accessibility of the Inner West with all the benefits of living spaces designed for the most modern of lifestyles.

Sculptural gardens infiltrate the foyer, meshing the building with its environment. Inside the story is equally modern, loggias which enhance and add flexibility to the open plan.

Trio is just a 10 minutes bus ride to Sydney CBD, with major universities, RPA Hospital, Broadway Shopping Centre, Annandale shopping village and transport all within walking distance.

Apartment features: -

- Spacious living area
- Ultra modern open plan kitchen with gas cook top and dishwasher
- Private loggia with timber decking, ideal for alfresco entertaining
- Large bedroom with built-in wardrobe, light and airy throughout
- Dedicated study space, ideal for home office, internal laundry
- Dual access bathroom with separate bath and shower

🛏 1 🚿 1 🚗 1

Price

L12 1 Sterling Cct | DEPOSIT
TAKEN

Property Type

Rental

Property ID

3736

Agent Details

Michelle Kilala - 0419 777 239
michelle@greenclyff.com.au

Office Details

Greenclyff Sydney Kent St
Level 10/488 Kent Street Sydney NSW
2000 Australia
02 8823 8818

greenclyff
Inner city specialists